

2025 PIT Presentation

March 5, 2025 | System Impact Committee

Jonathan Russell, Director, AC Health Housing & Homelessness Services

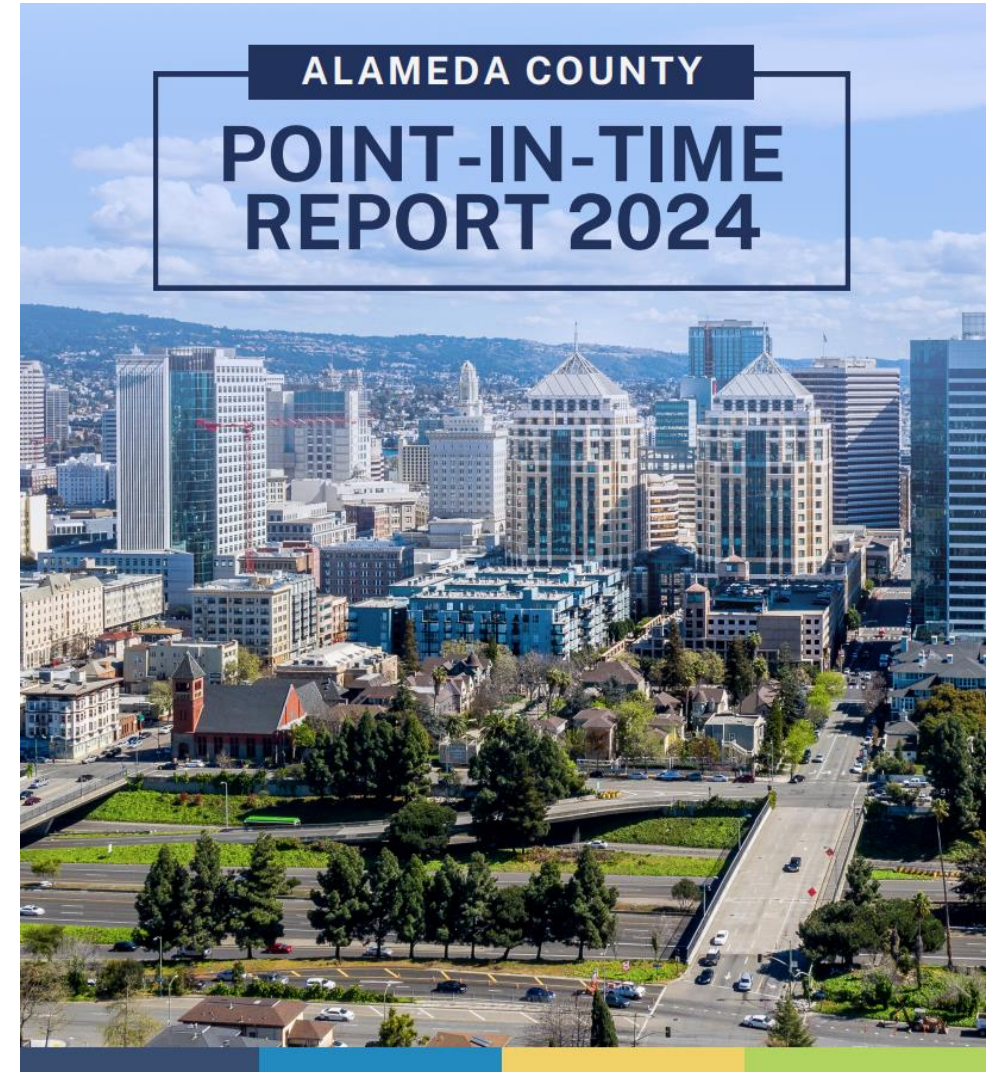


Alameda County Health

Full Report Released – 12/11/2024

90-page full report released with county wide and city level infographics, as well as public dashboard.

- Press Release [here](#)
- Report and Infographics [here](#)
- Public Dashboard [here](#)



Prepared By
SimtechSolutions,inc.



Alameda County Health
**Housing and
Homelessness
Services**

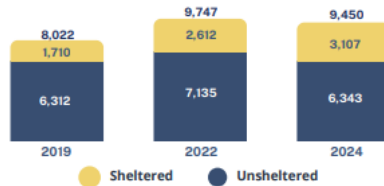




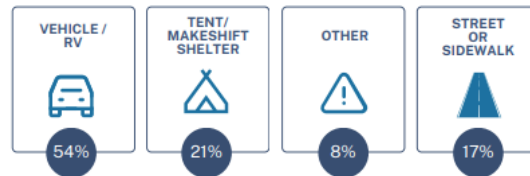
ALAMEDA COUNTY

HOMELESS CENSUS & SURVEY 2024 EXECUTIVE SUMMARY

POINT IN TIME COUNT TRENDS



UNSHeltered SLEEPING LOCATIONS



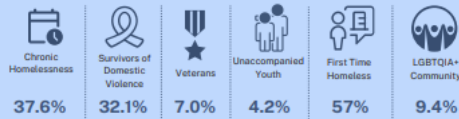
RESIDENCE PRIOR TO BECOMING HOMELESS



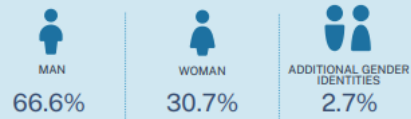
SHELTERED / UNSHELTERED POPULATION



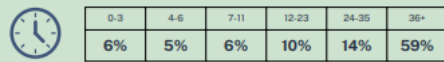
HOUSEHOLDS CHARACTERISTICS



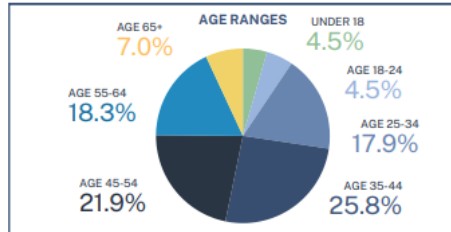
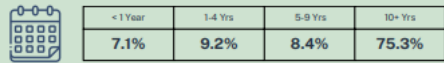
GENDER IDENTITIES



LENGTH OF CURRENT EPISODE OF HOMELESSNESS (IN MONTHS)

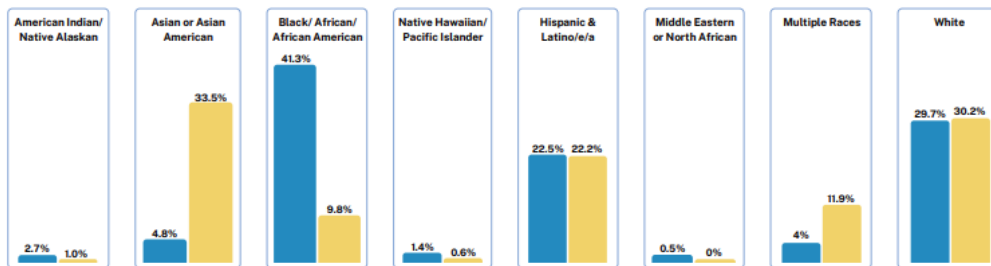


LENGTH OF TIME LIVING IN ALAMEDA COUNTY



RACE IDENTITIES COMPARED TO GENERAL POPULATION

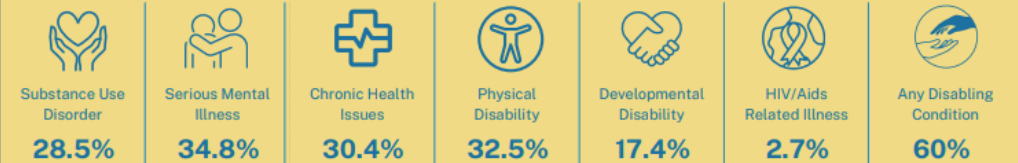
● PIT ● General Population *Census data does not currently differentiate between Hispanic/Latino/a/e status for Multiple Races



ALAMEDA COUNTY

HOMELESS CENSUS & SURVEY 2024 EXECUTIVE SUMMARY

SELF-REPORTED DISABILITY PREVALENCE



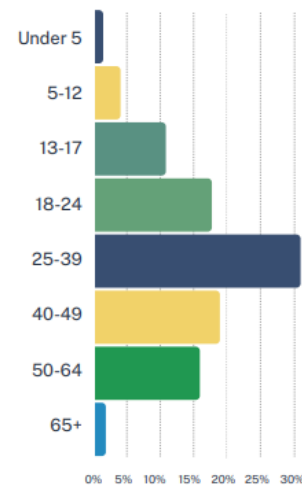
PRIMARY CAUSES OF HOMELESSNESS



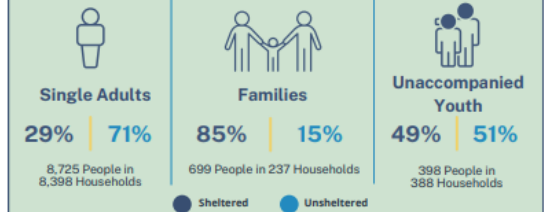
ADDITIONAL HOUSEHOLD CHARACTERISTICS



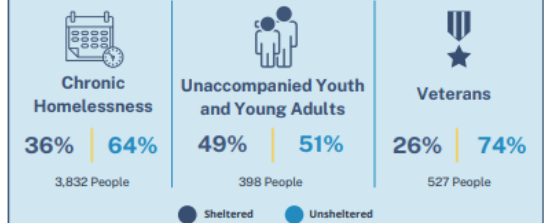
AGE AT FIRST EXPERIENCE OF HOMELESSNESS



HOUSEHOLD BREAKDOWN



SELECT POPULATION LOCATIONS



Dashboard Companion Resource

Alameda County 2024 PIT Count-Public by Simtech Solutions

PIT Trends | Demographics | Unsheltered Insights | Bed Inventories

Additional Insights into Unsheltered Homelessness Gathered from Community Specific Surveys

Select Jurisdiction
For the Entire CoC, Select "All" from the Dropdown

Use the Jurisdiction Filter to view results by Jurisdiction. Refine your results by clicking on data points to view more dashboard page provides insights for the unsheltered homeless population who chose to answer survey questions. The questions, therefore the percentages are based on the number (n) of people who provided answers to each question

Gender

Male	Female
1,024 (n=68.0%)	425 (n=28.2%)

Age

35-44
28.8% (n=434)

Homelessness History

First Time Homeless	Duration of Current Homelessness Episode					
	0 to 3 months	4 to 6 months	7 to 11 months	12 to 23 months	24 to 35 months	36 months ..
57.0% (n=697)	6.1% (n=74)	5.4% (n=66)	5.5% (n=67)	10.2% (n=125)	13.9% (n=170)	58.9% (n=719)

Age Homelessness First Experienced

Age Group	Percentage	n
Under 5	1.2%	14
5-12	3.8%	43
13-17	10.6%	121
18-24	30.8%	351
25-39	18.7%	213
40-49	1.6%	18
50-64	1.6%	18
65 or older	1.6%	18

Address Prior to Becoming Homeless

In Alameda County	78% (n=477)
Outside of Alameda County	22% (n=135)

Length of Time Living in Alameda County

Less than 6 months	3.5% (n=41)
6 months to 1 year	3.6% (n=42)
1-4 years	9.2% (n=107)
5-9 years	8.4% (n=98)
10+ years	75.3% (n=879)

Income & Benefits

Employment Status (Hover over segments for more details)

Not Employed	28.4%	18.7%	42.7%	(89.8% n=1,106)
Employed	4.5%	3.7%		(10.2% n=120)

Benefits Received (n=1,180)

SNAP/Food Stamps/WIC/CalFresh	Medi-Cal/Medicare	General Assistance	Not Receiving Benefits	Unsure if Receiving Benefits	SSI/SSDI Disability	Part Time Earned Income	CalWORKs/TANF	Full Time Earned Income	Other Veteran Benefits	Pension or Retirement	VA Disability	Child Support
35.1%	22.4%	21.8%	19.7%	16.5%	14.9%	4.4%	4.0%	3.2%	1.0%	0.8%	0.6%	0.5%

Point-in-Time Count of People Experiencing Homelessness Trends over Time

Hover over charts to view more details about each measure.

Select the Number of Years to Display from Dropdown: Last 10 Years

Color Legend: Overall, Sheltered Homeless, Unsheltered Homeless

Point-in-Time Count Trends Over Time for CA-502 Oakland, Berkeley/Alameda County CoC

Year	Overall	Sheltered Homeless	Unsheltered Homeless
2015	4,040	1,643	2,397
2017	5,629	1,766	3,863
2019	8,022	1,710	6,312
2022	9,747	2,612	7,135
2024	9,450	3,107	6,343

Individual Homelessness

Year	Sheltered	Unsheltered
2015	902	2,153
2017	1,081	3,837
2019	1,213	6,283
2022	2,090	6,813
2024	2,514	6,237

Family Homelessness

Year	Sheltered	Unsheltered
2015	741	244
2017	685	497
2019	522	322
2022	593	106
2024	593	106

Percent Change in Homelessness from Previous Count Year

Category	2015	2017	2019	2022	2024
Overall Change	-5% ↓	39% ↑	43% ↑	22% ↑	-3% ↓
Sheltered Change	-15% ↓	7% ↑	-3% ↓	53% ↑	19% ↑
Unsheltered Change	3% ↑	61% ↑	65% ↑	13% ↑	-11% ↓

Veteran Homelessness

Year	Sheltered	Unsheltered
2015	157	231
2017	133	378
2019	141	543
2022	120	430
2024	140	394

Chronic Homelessness

Year	Sheltered	Unsheltered
2015	339	1,409
2017	487	1,619
2019	901	1,737
2022	1,391	2,441

Unaccompanied Youth Homelessness

Year	Sheltered	Unsheltered
2015	238	71
2017	253	338
2019	143	588
2022	170	662
2024	193	203

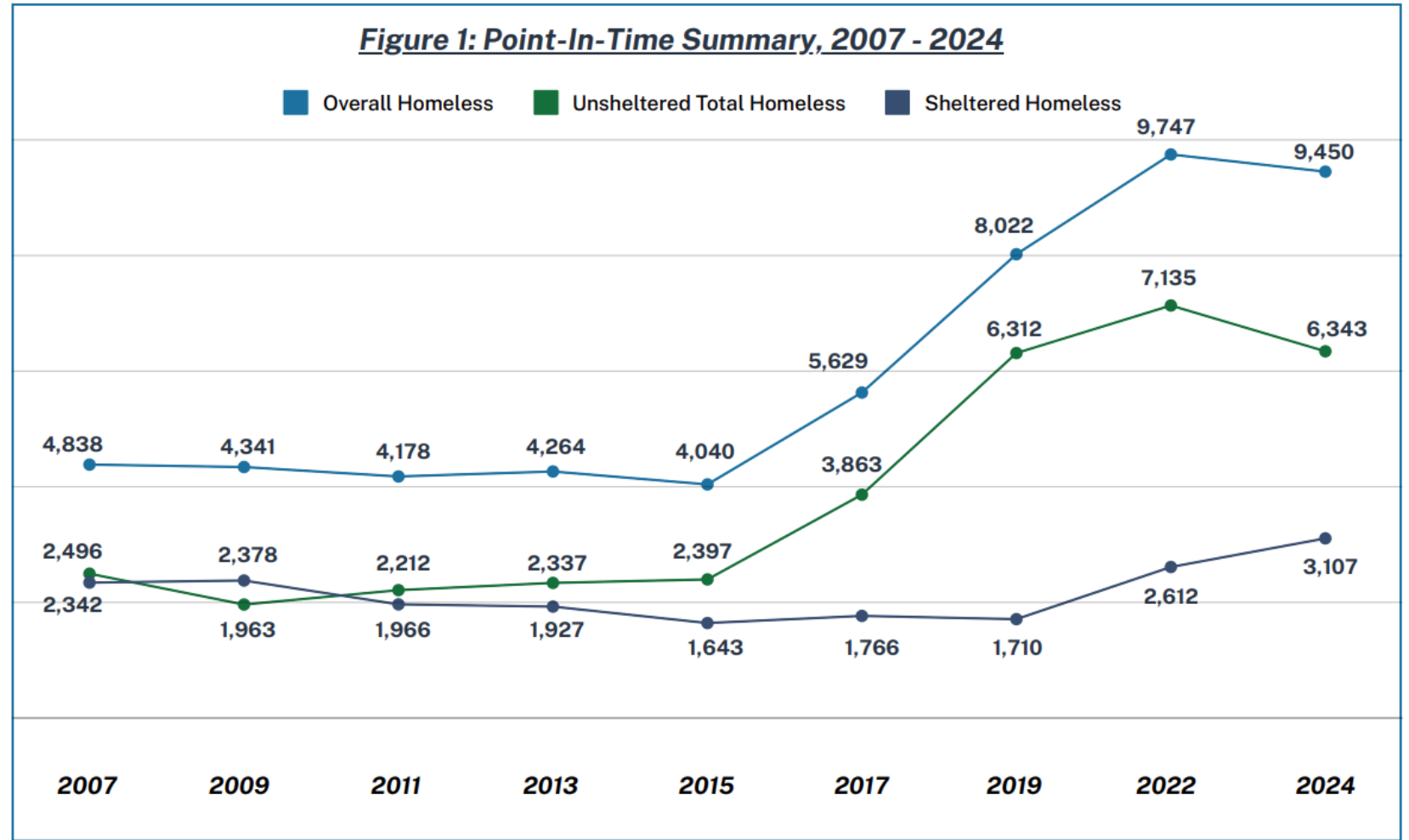
Alameda County 2024 PIT Count-Public | Tableau Public



Systemwide Data Insights

2024 Overall Trends

- Overall Count **-3%**
- Unsheltered **-11%**
- Sheltered **+19%**
- This is the first time since 2013 that the overall PIT Count has gone down.
- This is the first time since 2009 that the sheltered rate has increased while the unsheltered rate has decreased.



Causes of Homelessness

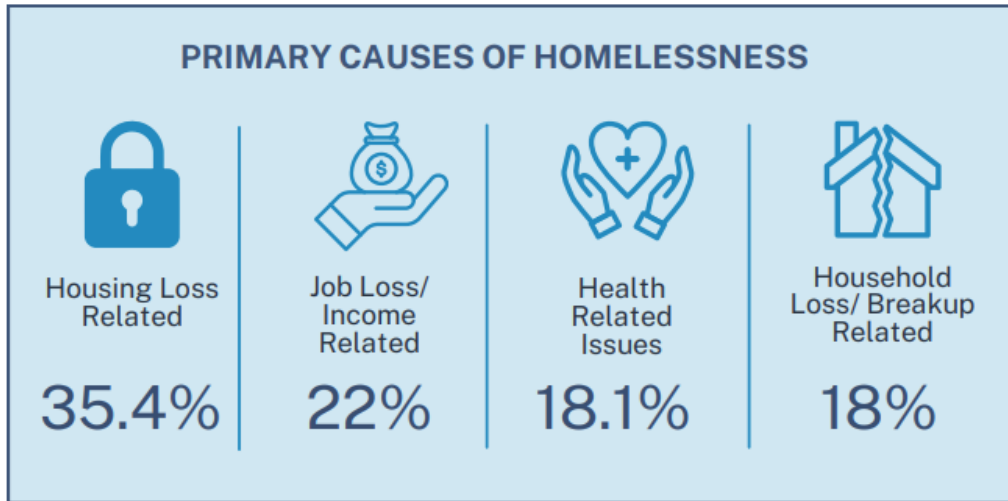
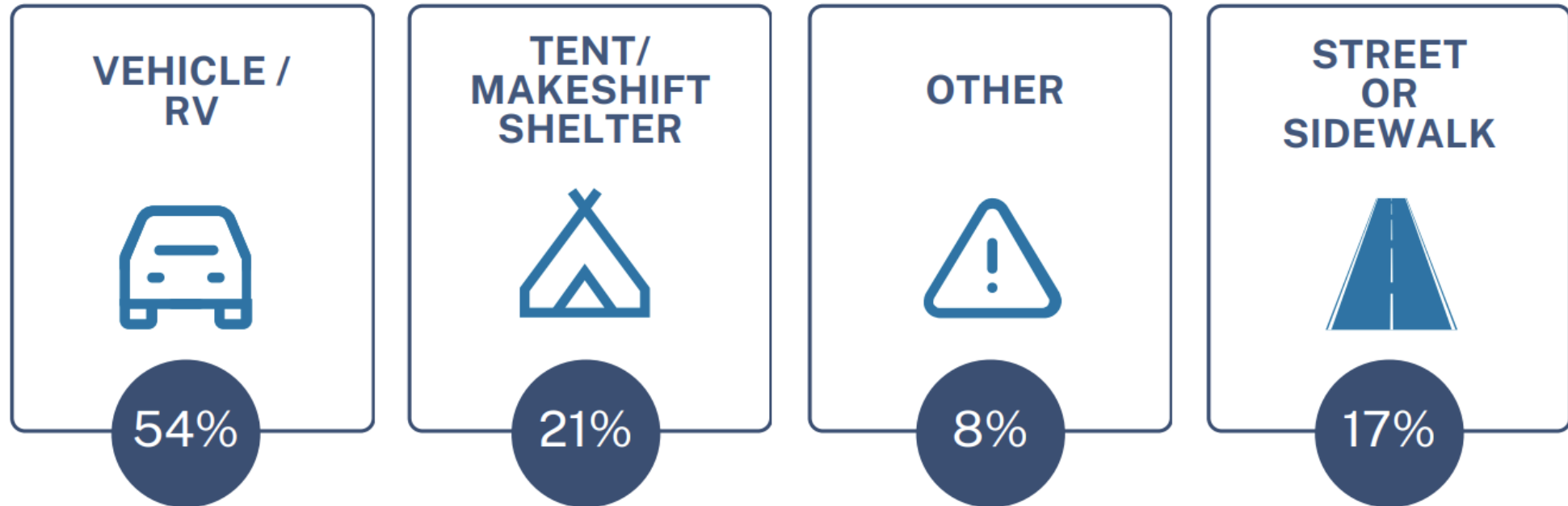


Table 9: Primary Reasons for Homelessness *N=1,312*

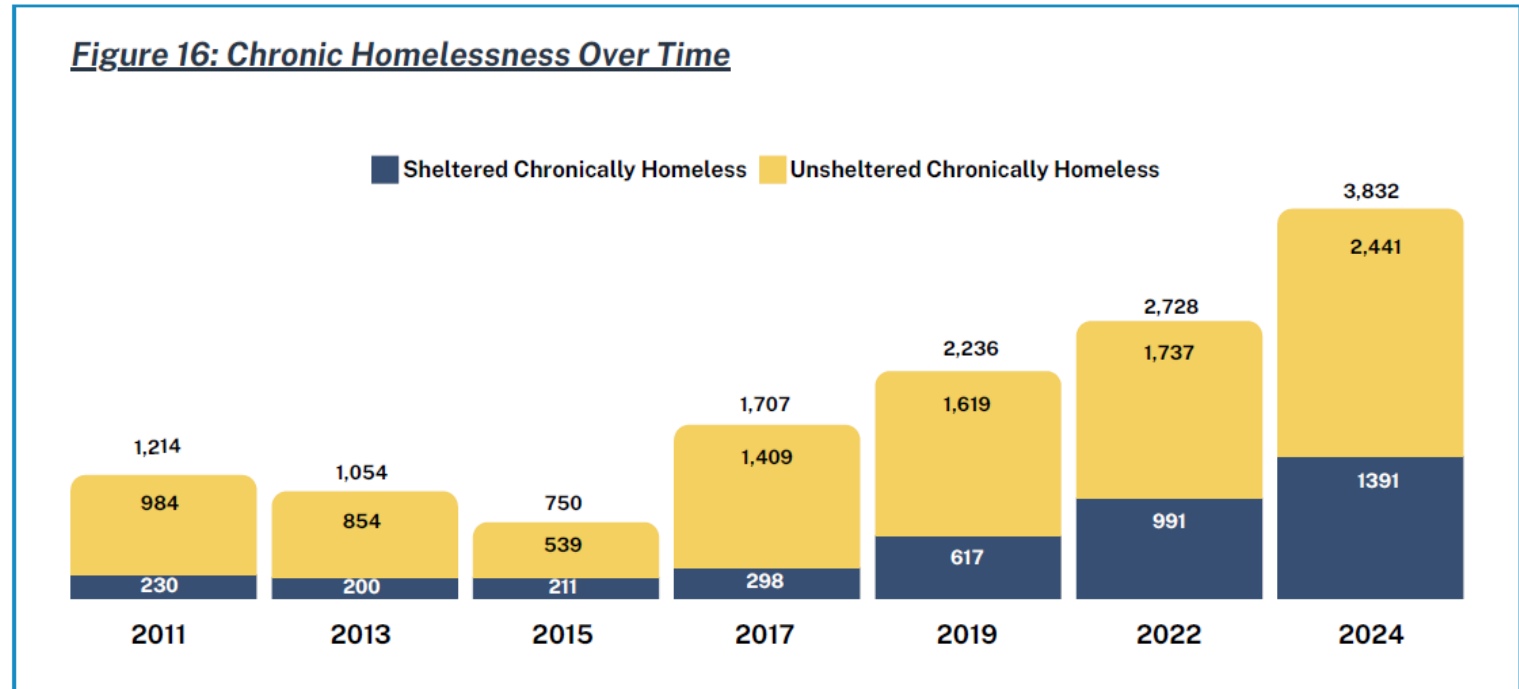
Housing Loss Related	35.4%
Eviction, Foreclosure, Rent Increase	17.2%
Can No Longer Stay with Friends or Family	12.7%
Lost Subsidy	6.9%
Stopped Using Supports	1.7%
Aged Out of Foster Care	0.5%
Gender or Sexual Orientation not Accepted	0.6%
Income Related	22.0%
Job Loss	14.9%
Other Money Issues	8.5%
Other	19.2%
Health Related	18.1%
COVID Related	4.0%
Mental Health Issues	5.3%
Physical Health Issues	3.7%
Substance Use Issues	9.1%
Household Breakup Related	18.0%
Death of Someone Close	9.5%
Divorce or Breakup	9.0%
Victimization Related	12.4%
Domestic Violence	6.4%
Crime Victim	6.1%
Racism	0.8%
Incarceration	5.6%

Unsheltered Living Situations Homelessness



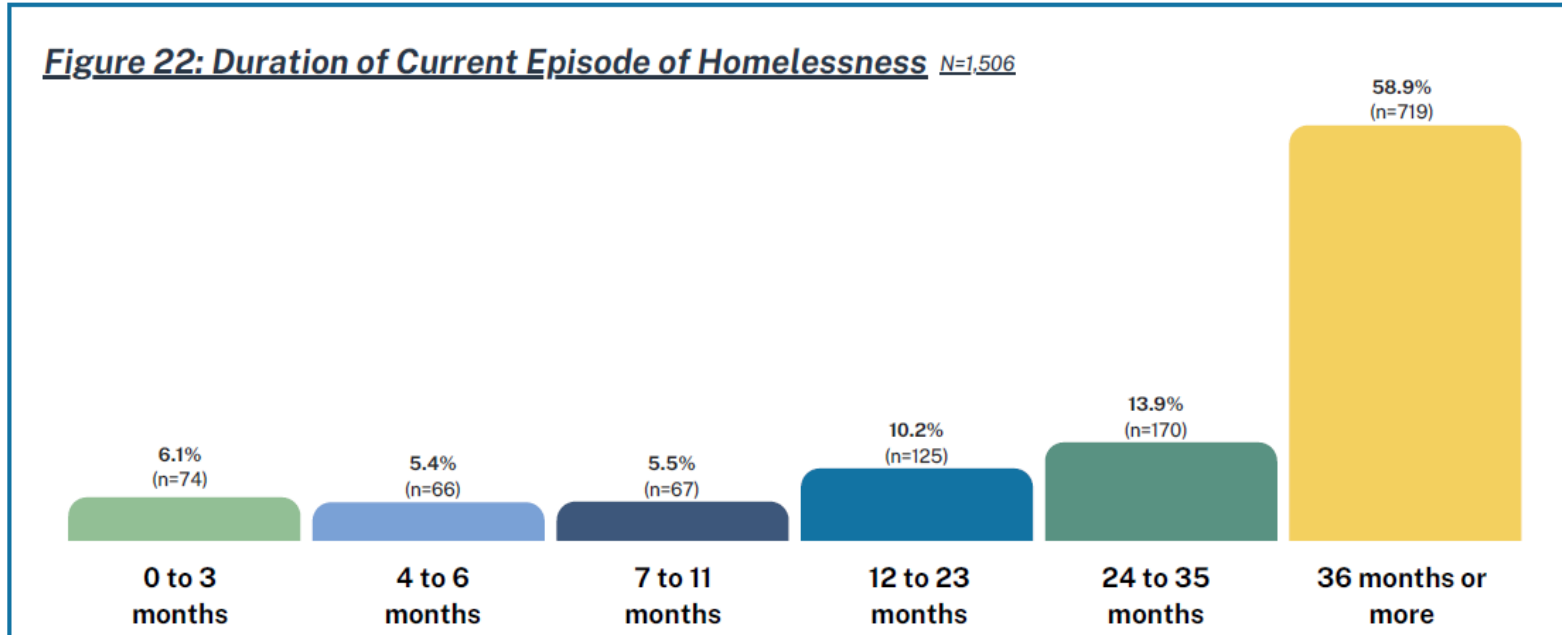
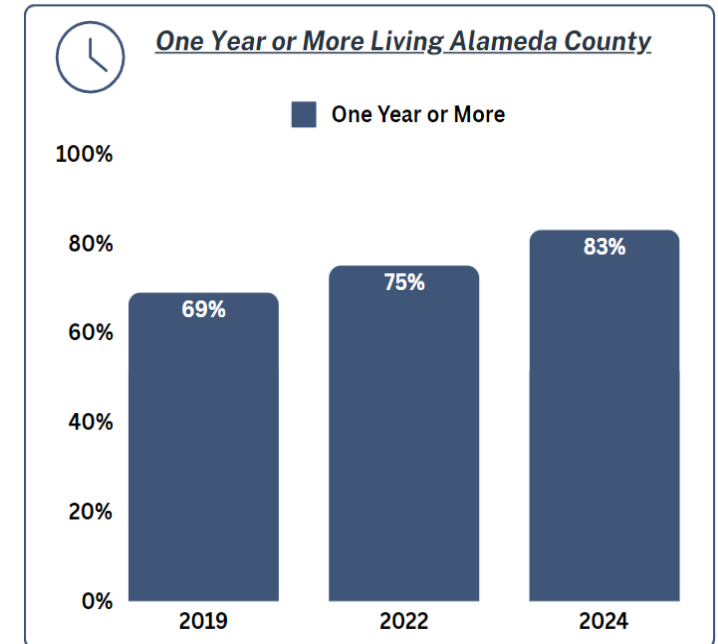
Chronic Homelessness

- **Chronic homelessness increased by 40%** overall since 2022, evidence of stagnating housing pathway resources and extended episodes in sheltered and unsheltered settings.
- Overall, **38% were chronically** homeless in 2024, a **10% increase** in this proportion compared to 2022 (28%).
- 55% of single adults in shelter were chronically homeless, an 11% increase from 2022



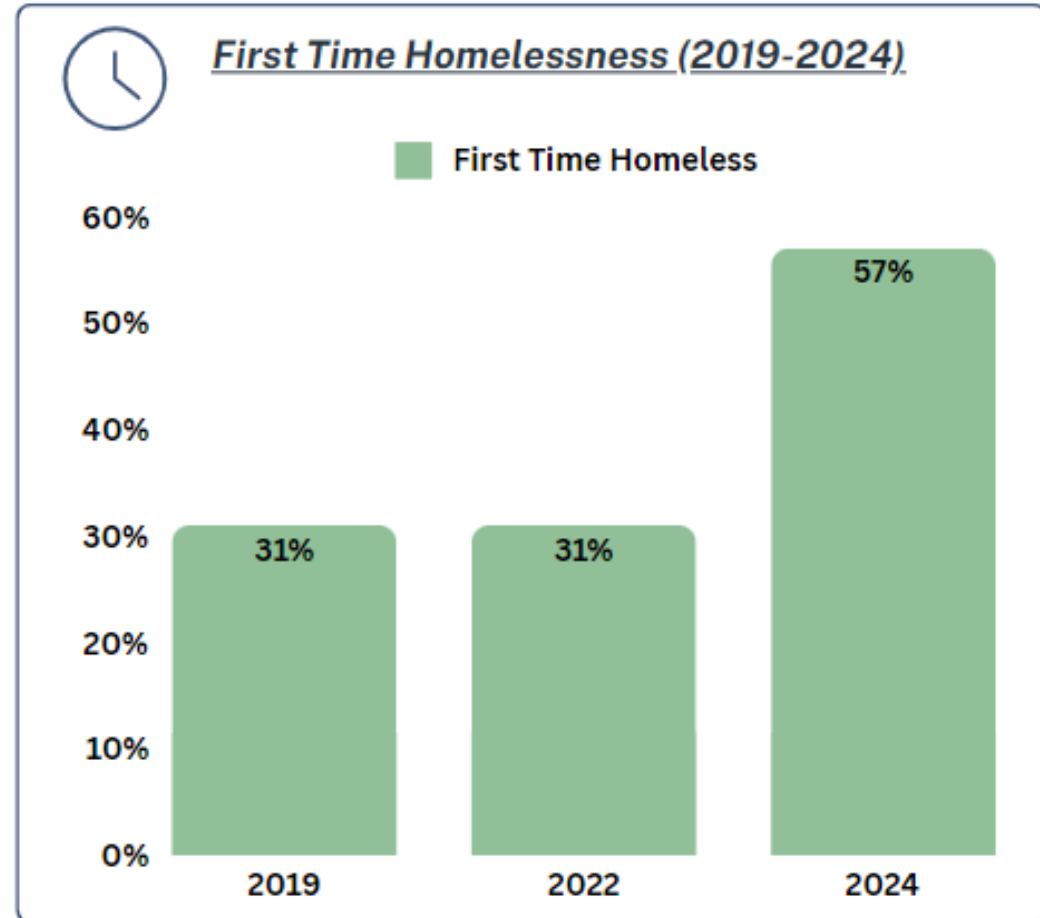
Lengths of Time Homeless

- 83% reported current episodes of 1 year or more (up from 75% in 2022 and 69% in 2019)
- **59%** reported their current episode of homelessness has been for **36 months or more**.



First Time Homelessness

- First time homelessness went up significantly in comparison to previous counts
- 57% of those surveyed in 2024 were homeless for the first time vs. 31% in 2019 and 2022
- Underscores the need for **targeted homelessness prevention** countywide



Barriers to Shelter

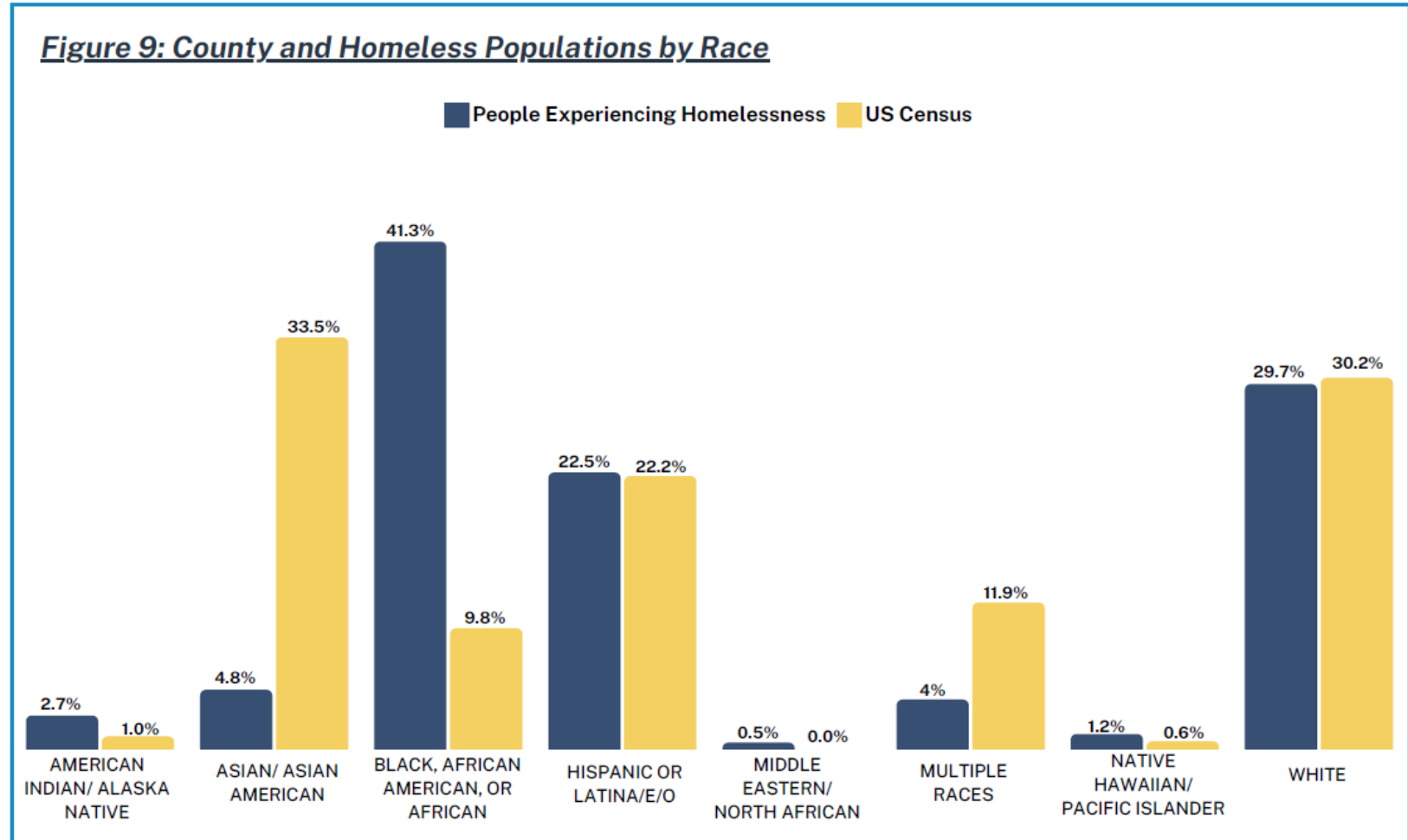
- 58% of survey respondents cited shelter experience related reasons as a barrier to shelter
- 54% of respondents cited rules and restrictions as a primary barrier to accessing shelter
- Timely insights as H&H seeks to expand interim settings with Measure W funding

Table 11: Barriers to Accessing Shelter N=1,057

Shelter Experience Related	58.4%
Too Crowded	23.9%
Personal Safety Concerns	19.7%
Privacy Concerns	18.7%
Shelters are Full	14.3%
Germs	10.8%
No Storage for Belongings	10.0%
Bugs	6.2%
Not Enough Staff	3.2%
Racially Unwelcome	2.5%
Gender or Sexual Orientation not Accepted	0.6%
Rules and Restrictions Related	54.2%
Curfew	23.7%
Too Many Rules	18.4%
Can't Bring My Pet	8.9%
Can't Stay with Partner/Family	7.8%
Can't Stay with Friends	5.7%
Hours of Operation	4.9%
Alcohol and Drugs Prohibited	4.7%
Location Related	14.9%
Don't Know Where Shelters Are	9.7%
Shelters Too Far Away	5.8%

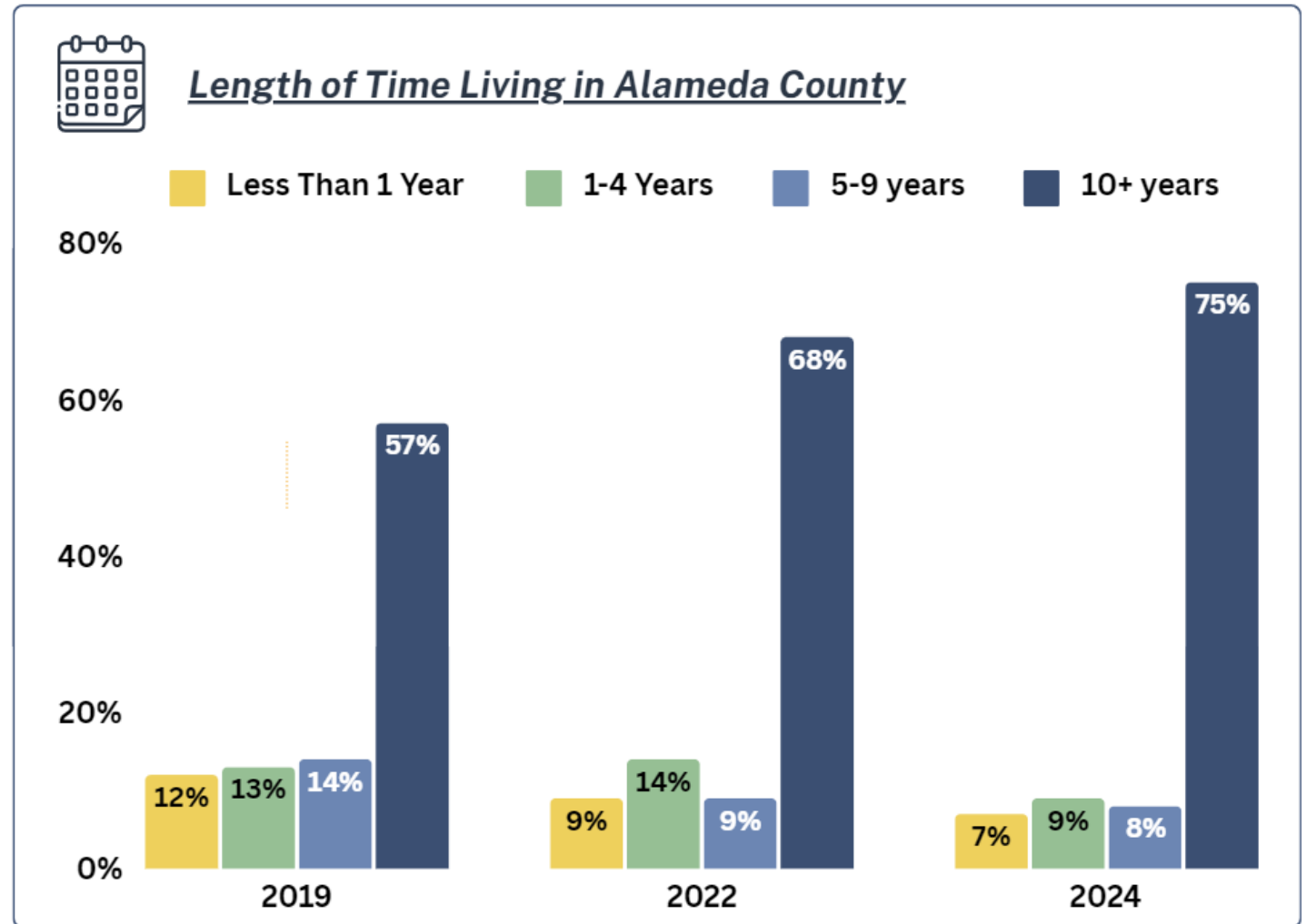
Entrenched Racial Disparities Persist

- People who identify as Black or African American constitute 9.8% of the general population but 41.3% of the homeless population (down slightly from 43% in 2022).
- American Indian / Native Alaskans comprise 1.0% of the general population but 2.7% of the homeless population
- 0.6% of the population in Alameda County is Native Hawaiian or Pacific Islanders vs. 1.2% of the PIT Count



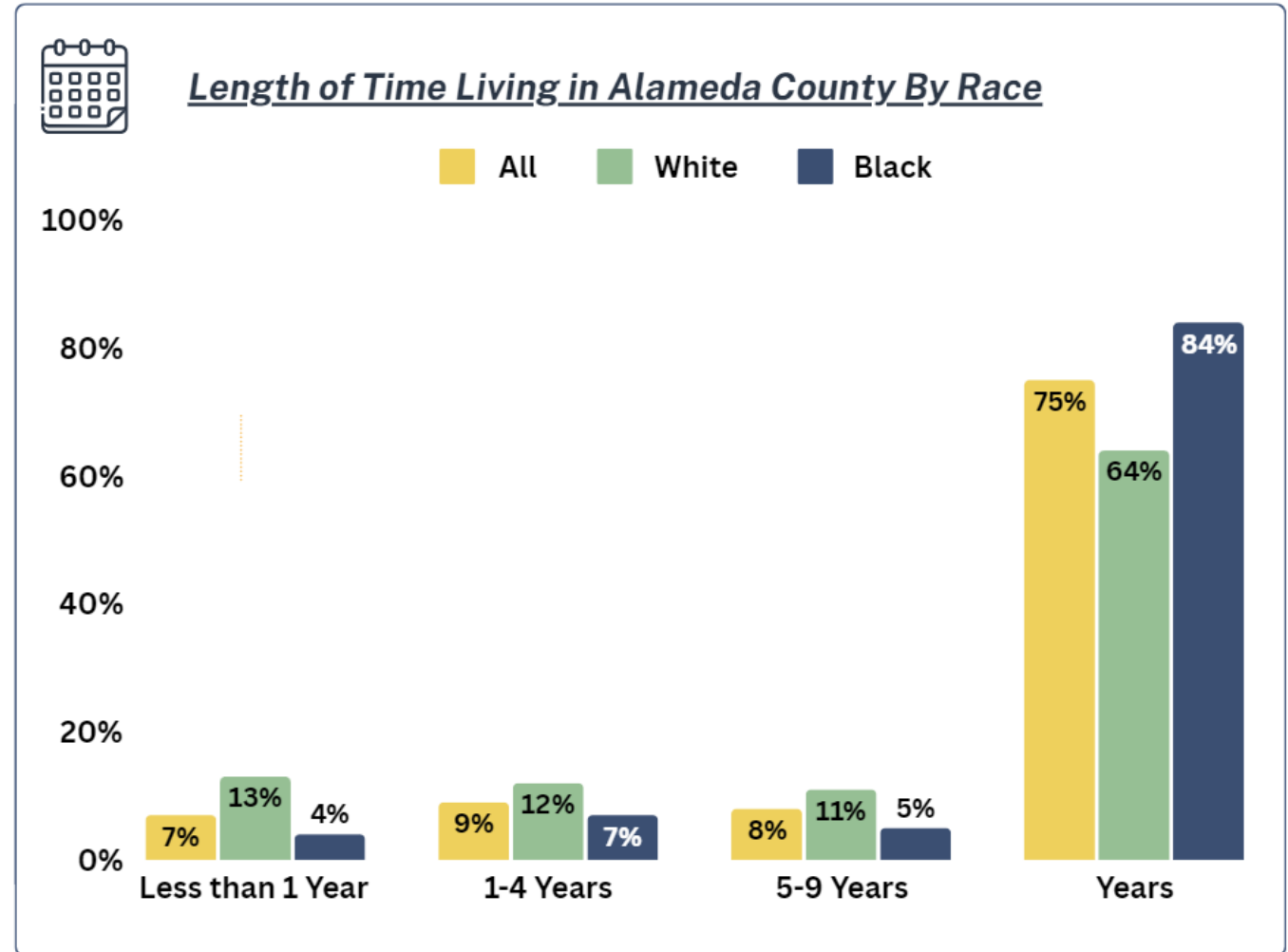
Length of Time Living in Alameda County by Year

- More than **75%** of the unsheltered population has **lived in Alameda County for 10 years or more**, a 17% increase since 2019
- 93% are either from or have lived in Alameda County for extended periods of time.



Length of Time Living in Alameda in 2024 by Race

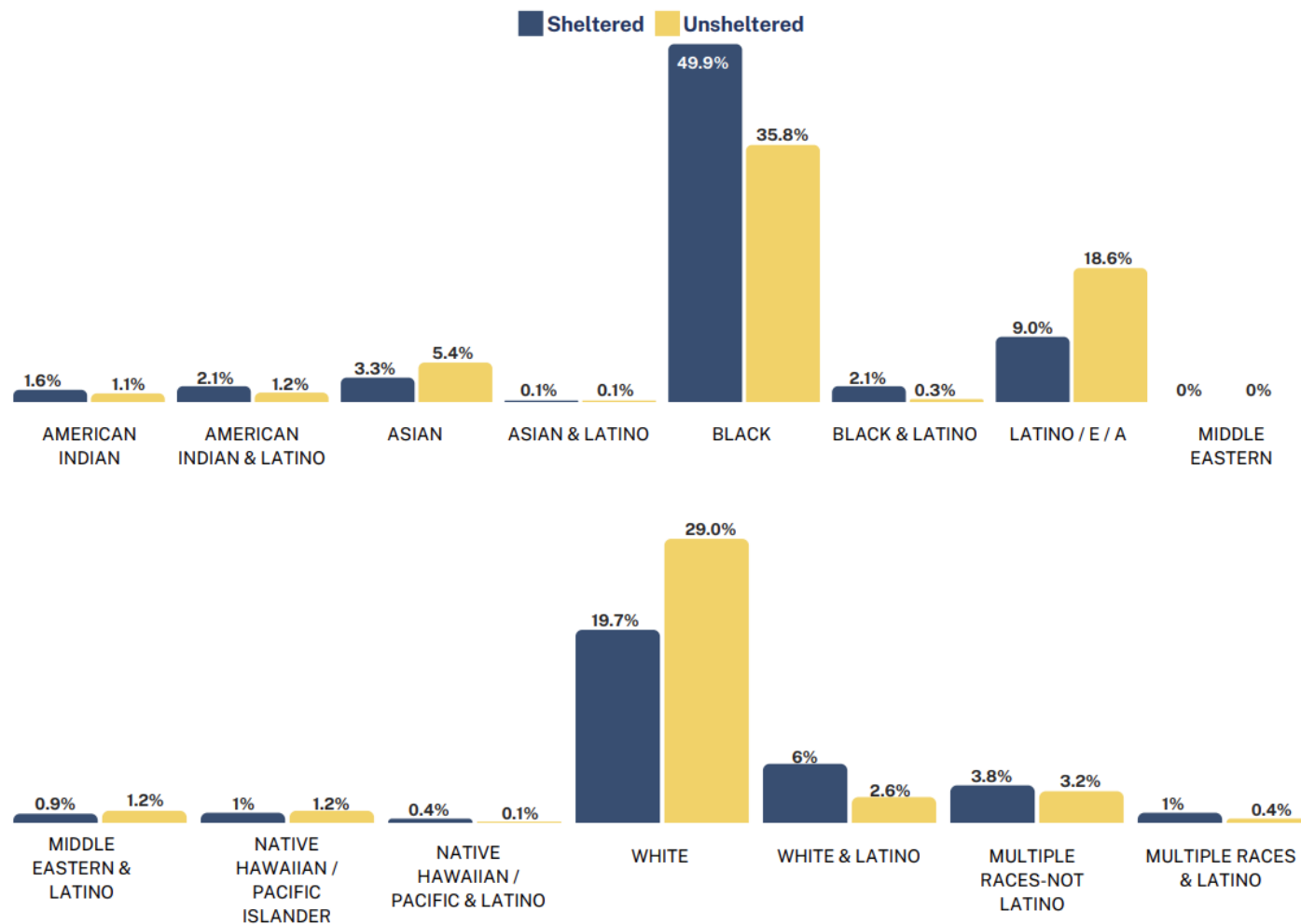
- **White residents** are more likely to have **shorter lengths of time living in Alameda County** than the average
- **Black residents** are more likely to have **longer lengths of time living in Alameda County** than the average and 20% more are likely to have lived in Alameda County compared to white residents
- **85% of Black residents** reported addresses in Alameda County prior to becoming homeless vs. **64% of white respondents** (78% was the average overall)



Racial Differences in Sheltered and Unsheltered

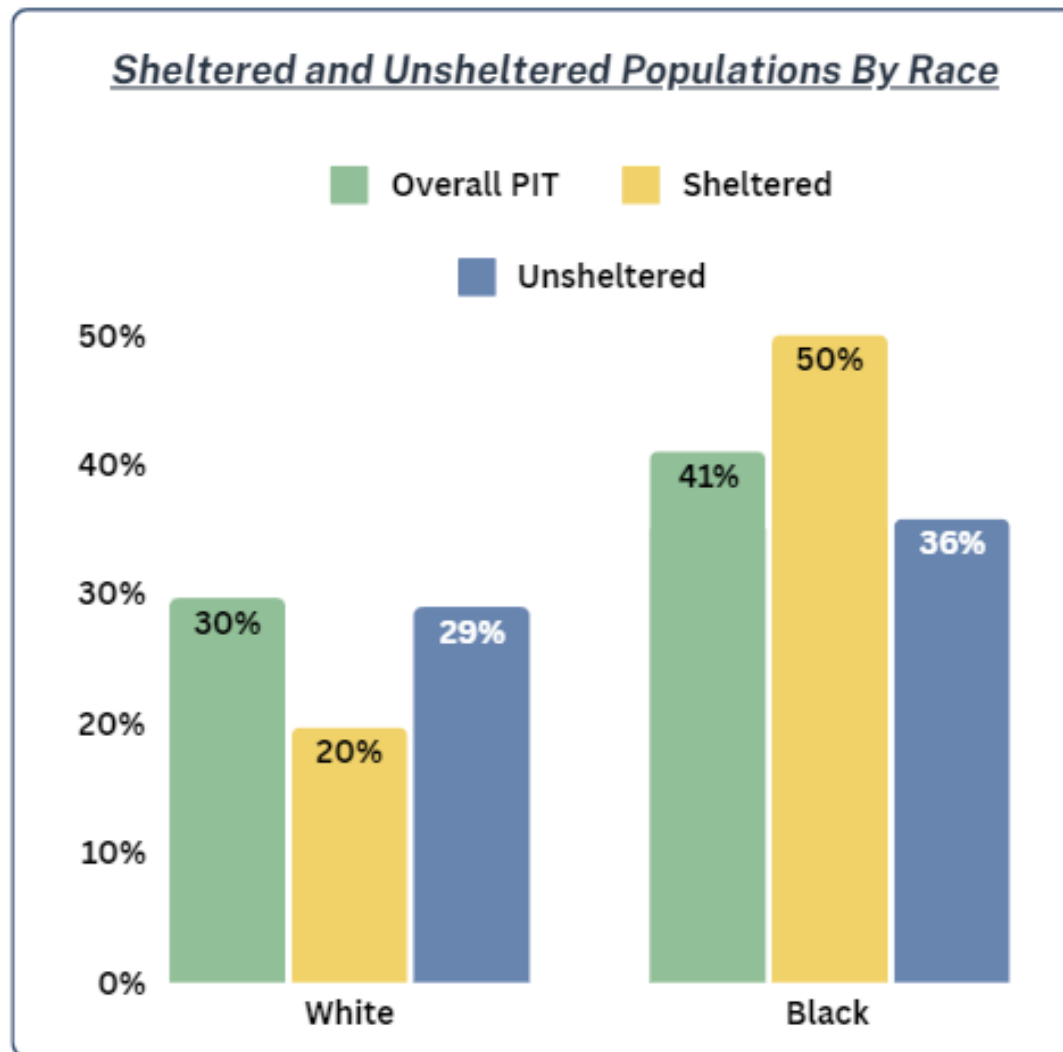
Black, African American, or African people are overrepresented in the overall homeless population. However, representation by race is different when looking at people who are sheltered and unsheltered in Alameda County. People who identify as **Asian, Hispanic/Latino/e/a, and White** are more likely to be **unsheltered**, while people who are **Black, African American, or African** make up a larger share of the **sheltered population**

Figure 10: Sheltered and Unsheltered Populations by Race



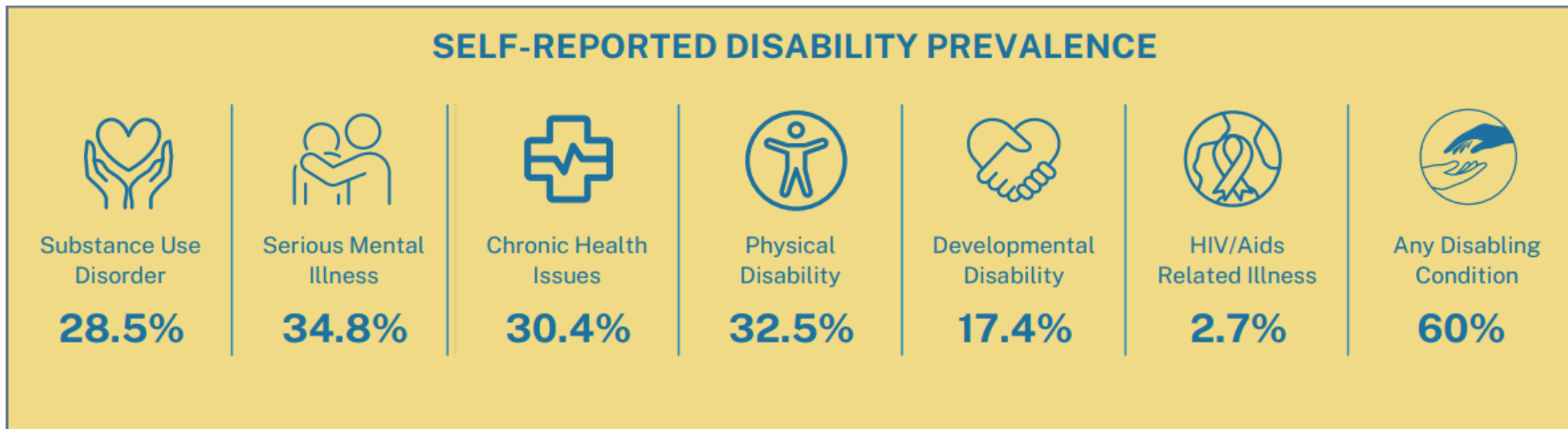
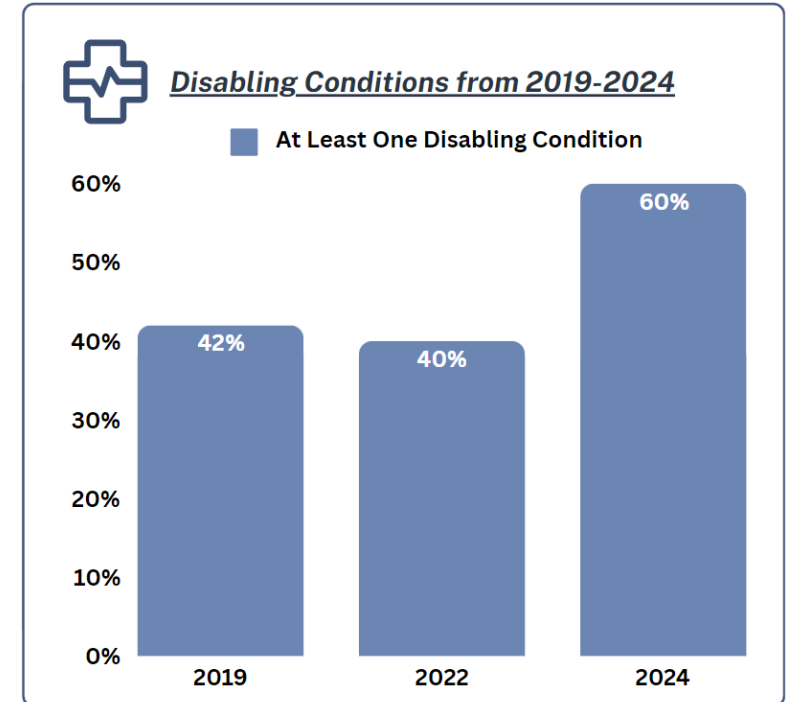
Racial Differences in Sheltered and Unsheltered

- Black households are **overrepresented** in the **sheltered population** and **underrepresented** in the **unsheltered population** relative to their representation overall
- Conversely, white households are underrepresented in the sheltered population but represented in roughly equal proportions in unsheltered and overall homelessness



Disabling Conditions

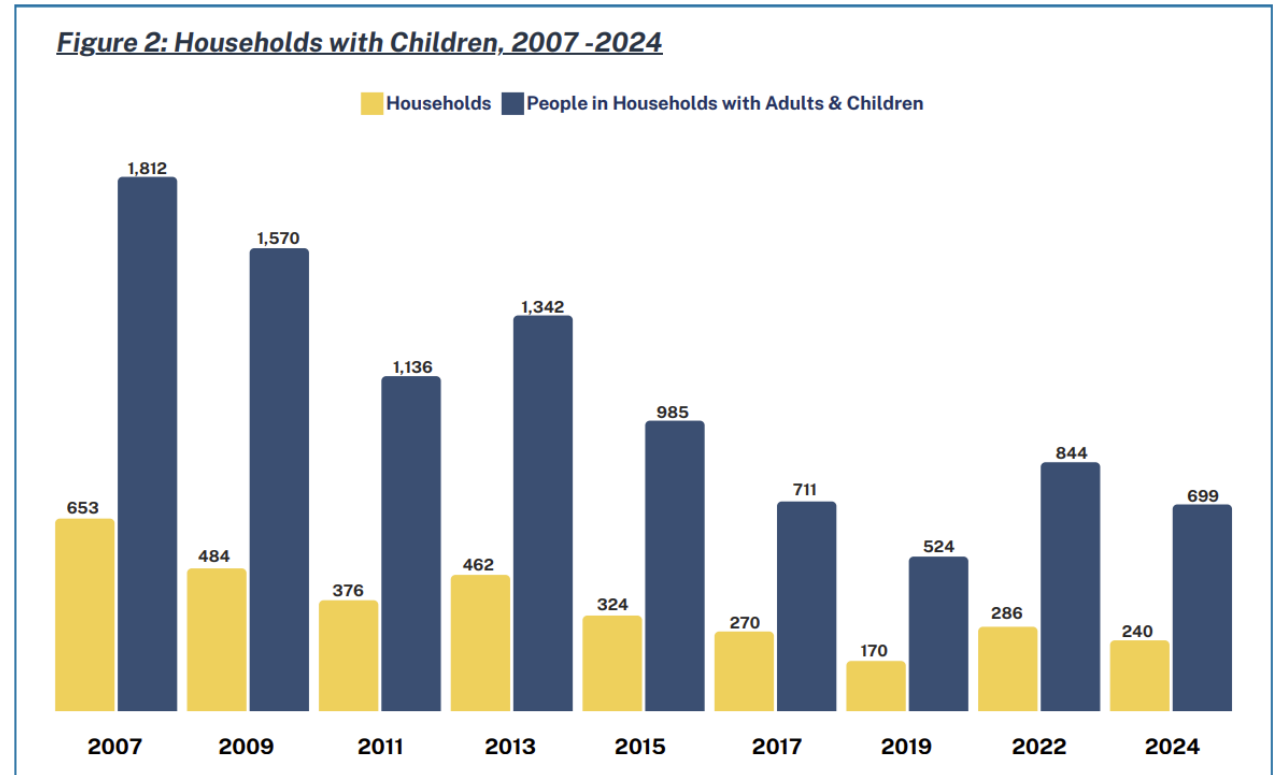
- Respondents who identified **at least one disabling condition is up 20%** from the 2022 PIT
- These increases align with provider experiences across program types – increasing acuities, comorbidities, and complex health related barriers in sheltered and unsheltered settings



Families and Youth Data Insights

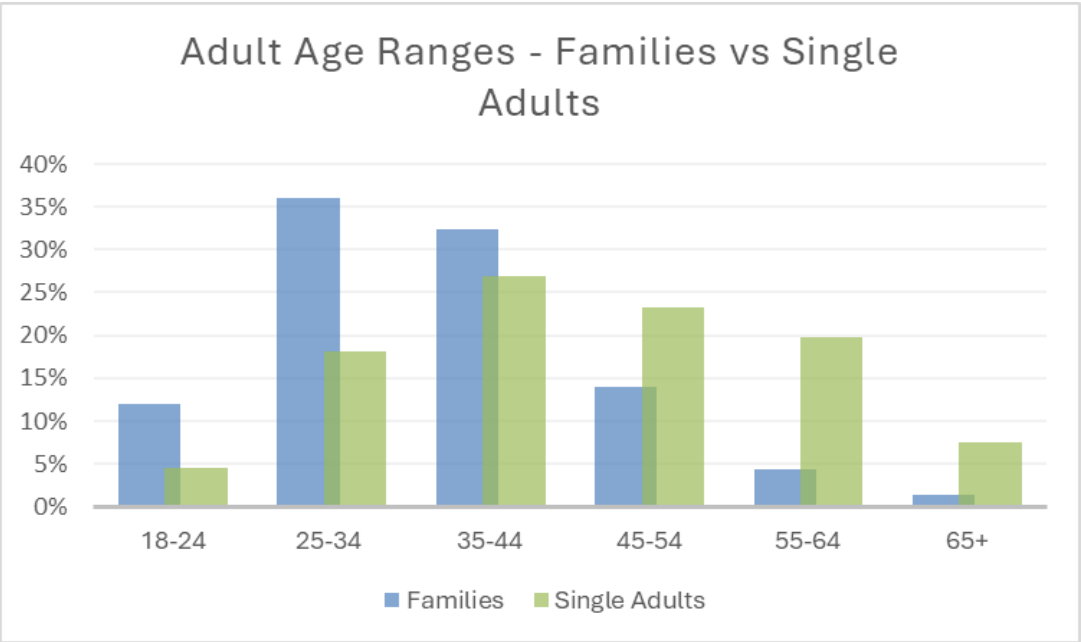
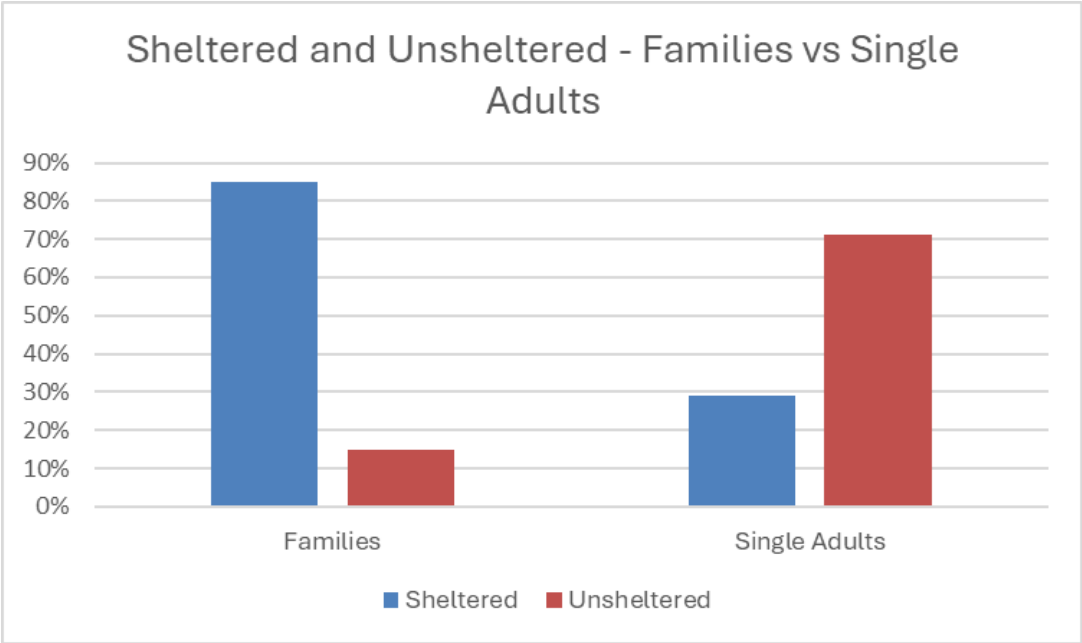
Family Homelessness

- Households with both adults and children (i.e., families) made up **7.4% of the population** experiencing homelessness in the 2024 PIT Count.
- The average household size was 2.85 people.
- There were **240 family households (699 individuals)** in the 2024 PIT Count
- **This represents a 17% decrease** from 2022
- Since 2007, the number of households with both adults and children **decreased by 63%** and the number of people within these households **decreased 61%**.



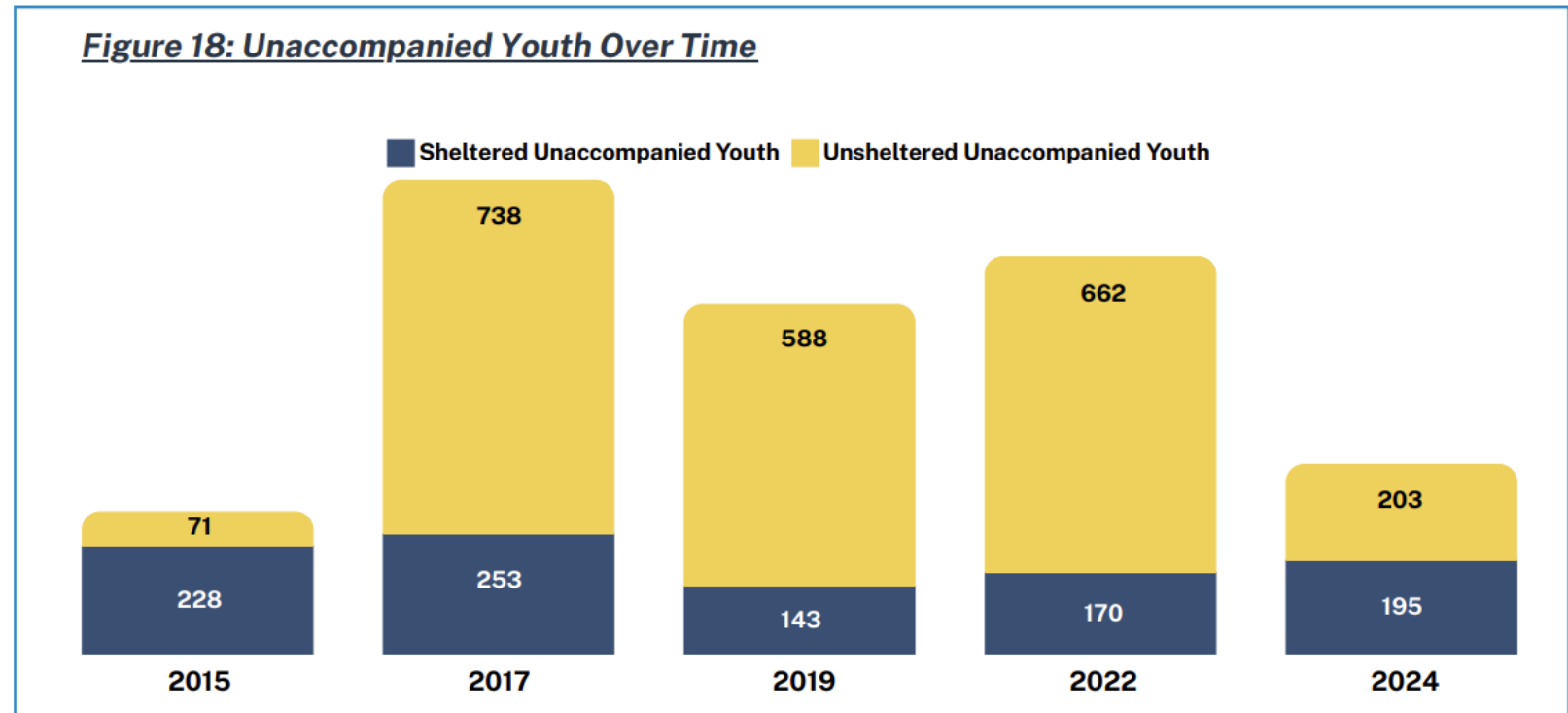
Family Homelessness

- 85% of families were sheltered vs less than one third (29%) among single adults
- 57% of those counted in families were under <18
- The average age of adults in family households was lower than single adult households



Youth Homelessness

- The estimated number unaccompanied youth **decreased 52.6%** from 832 people in 2022 to 398 in 2024.
- Unsheltered homelessness decreased from 80% in 2022 to 57% in 2024.
- 93% of youth were between the ages of 18 and 24 (7% were under 18)



Thank you

Questions and Comments



Alameda County Health

