



State of the CoC

11:00am-11:30am

What and who is the CoC?

A “Continuum of Care” refers to three things:

1. The planning body in a community that addresses homelessness. The CoC Board, known locally as the Leadership Board, makes decisions on behalf of this planning body (we have many committees that act on behalf of Leadership Board).
2. The HUD funding program for homeless housing and services
3. The system of services and housing interventions both short-term and long-term for people experiencing homelessness

The Oakland, Berkeley/Alameda County CoC (CA-502), also known as EveryOne Home, is the CoC for Alameda County.

EveryOne Home is both a collective impact initiative and the Oakland, Berkeley/Alameda County Continuum of Care CA-502 (Alameda CoC) comprised of representatives from the county, cities, nonprofits, advocates, and community members, including community members with lived experience.



What does a CoC do?

The planning body (Leadership Board), has several major duties including:

1. Operating the Continuum of Care (including design and implementation of Coordinated Entry)
2. Monitoring project and system performance
3. Planning for the CoC's geographic area. Includes coordinating the CoC system of services and housing interventions.
4. Select and approve projects for CoC Program funding

The planning body relies on support entities to complete these duties. The HMIS Lead, Collaborative Applicant, Coordinated Entry Lead, and CoC Planning Entity all work together to coordinate the homeless housing and service system. Details on these roles and responsibilities are in the Governance Charter.

The work on the current [Governance Charter](#) aimed to build the structures necessary to operationalize racial equity, amplify the voice of lived experience, and create greater equity in how partners from across the county can engage in the work of the Continuum of Care (CoC).

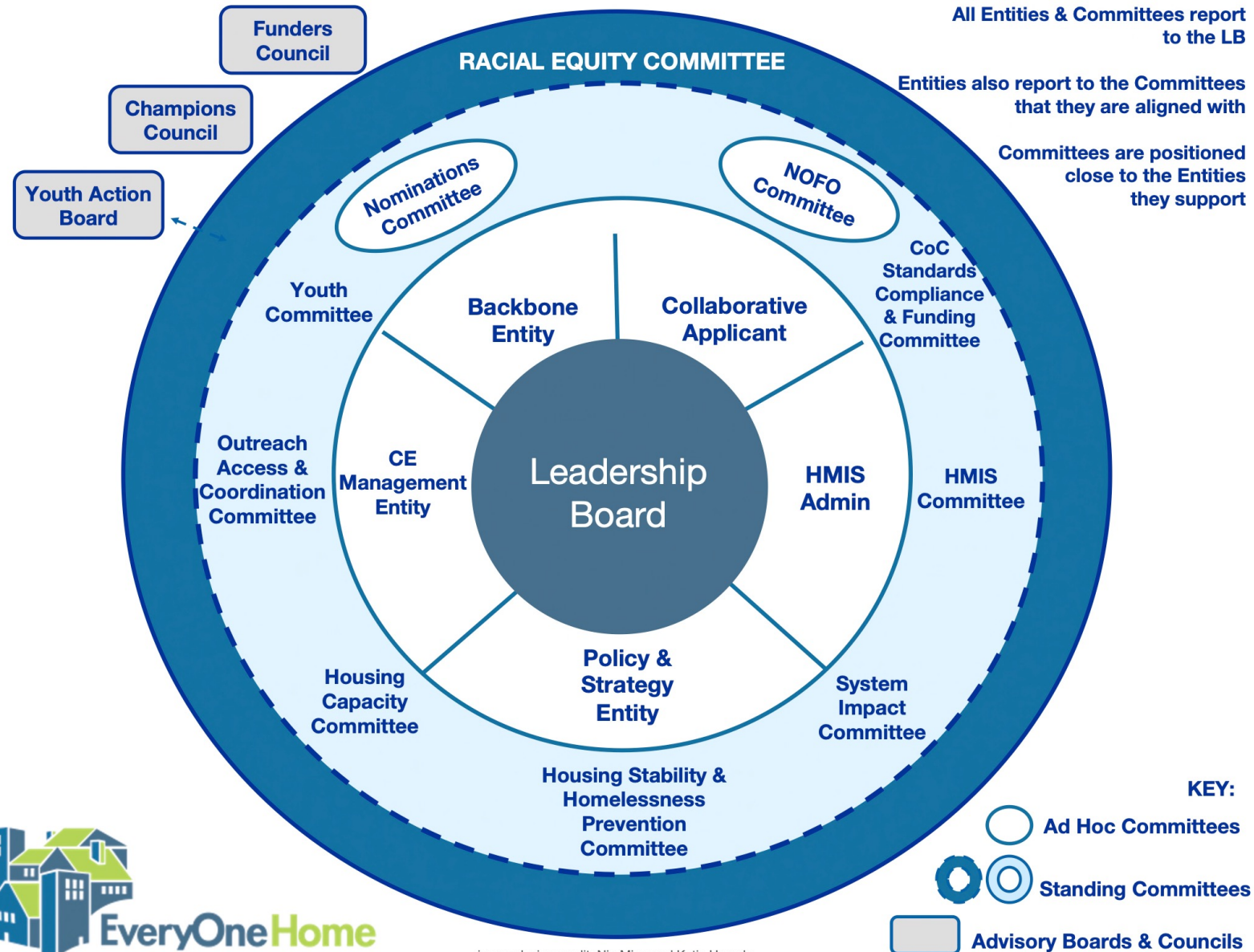


What does a CoC do?

Projects and Funding Streams the CoC oversees or connects with

1. Notice of Funding Opportunity (NOFO) Projects
 1. Letter of Interest Announcement
 2. Emergency Solutions Grant (ESG) Collaboration

CoC Organization Chart



Five Entities Designated in Charter

Backbone

- Leadership Board

HMIS
Administrative

- HMIS Committee

Coordinated Entry
Management Entity

- Outreach, Access and Coordination

Collaborative
Applicant

- CoC Standards, Compliance and Funding

Policy and Planning
Entity

- System Impact Committee (Outreach, Access and Coordination, CoC Standards, Compliance and Funding)

Memoranda of Understanding (MOUs) with Designated Entities – In Progress

- Agreements between Leadership Board and designated entities
- Spirit of collaboration and transparency
- Designates roles and responsibilities of:
 - Leadership Board
 - Designated entity
 - Held jointly by both parties
- Groups roles and responsibilities by:
 - Governance
 - Operation
 - Evaluation and reporting
- Regular review
 - Can be amended or modified in writing
- Basis for evaluations of designated entities



Designated Entity Roles



Backbone Entity

- Staffing support
- Homebase



Collaborative Applicant

- Submits annual CoC application and applies for and administers planning grant
- Alameda County Health – Housing and Homelessness Services (H&H)



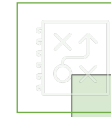
Coordinated Entry Management Entity

- Implements and oversees day-to-day operations of the CoC's CE System
- H&H



HMIS Lead Entity

- Manages the CoC's HMIS on the CoC's behalf
- H&H



Policy and Planning Entity

- Support CoC Operations through activities that enable the CoC to develop written policies and support the development of strategic planning efforts
- TBD

CoC Accomplishments Since Last Community Meeting: October 26, 2023

- Developed Interim AI Policy
- Developed Racial Equity Framework Draft
- Launched All Committees
- Launched Year-Round Notice of Funding Opportunity (NOFO) Workgroup
- Supported Unsheltered and Sheltered Point in Time (PIT) Count for 2024
- Confirmed HHAP5 application

Committee Updates

Racial Equity Committee:

- Sat Racial Equity Liaisons from all Committees and began onboarding.
- Developed Racial Equity Framework, which is now being shared with all Committees for input and feedback.

CoC Standards, Compliance, and Funding Committee:

- Supported the launch of the Year Round NOFO Workgroup, which is:
 - Reviewing scoring factors and performance measures,
 - Supporting outreach to potential new project applicants,
 - Updating the local competition process and supporting continuous improvement,
- Collaborating with the Racial Equity Committee and Youth Committees for input, and
 - Presenting to Leadership Board for approval.

Committee Updates

HMIS Committee:

- Reviewed the HMIS Policies and Procedures, and the HMIS Lead Monitoring Tool.
- Approved the Policies and Monitoring Tool so that the annual Monitoring Process can begin.

Housing Capacity Committee:

- Worked with H&H and HCD to research current housing inventory, the gaps in housing capacity, and the sources of data.
- Conducted a survey and is working with H&H to learn about property owner engagement and incentive strategies that could increase housing capacity by reducing barriers for people to access housing.



Committee Updates

Housing Stability and Homelessness Prevention Committee:

- Has been learning about prevention efforts in and throughout the county.
- The goal is to create a landscape of all the current prevention strategies and projects in Alameda County.

Outreach, Access, and Coordination:

- Formed Unsheltered Workgroup.
- Processing annual review and recertification of Coordinated Entry policies and procedures.



Committee Updates

System Impact Committee:

- Researched various data sources to measure performance and system impact.
- Explored the connections between data sources and the goals of the Home Together Community Strategy to develop a plan for tracking progress.

Youth Committee:

- Received a request from the NOFO Workgroup for input and feedback on the NOFO local competition.
- Spent the last few months exploring the local competition and scoring factors, brainstorming recommendations, and will finalize their input next month.

Thank You!

The work of the Continuum of Care is the work of people giving time, energy, and expertise to end homelessness in Alameda County.

Whether attending a Community Meeting, serving on a Committee, or volunteering for the Point in Time Count – the work of the Continuum of Care only happens because of people like you!

