




Home Together 2026 Community Plan

Proposed for adoption by Leadership Board

Home Together Community Plan Status Update

- Process Updates
 - Received Public Comment
 - Added Budget information
 - Incorporated feedback
 - Draft sent for final edits and design
 - <https://homelessness.acgov.org/reports.page?>
 - County/CoC Action Plan (for funds administered by county)
 - State provided baseline data
 - Draft Action Plan to follow with three-year goals
- 

Preview of Designed Document



Preview

Without addressing the impact of racism in our society, homelessness will continue to disproportionately impact African Americans and other people of color. Creating a mix of housing and services in order to reduce these enormous racial disparities is a major focus of this Plan.



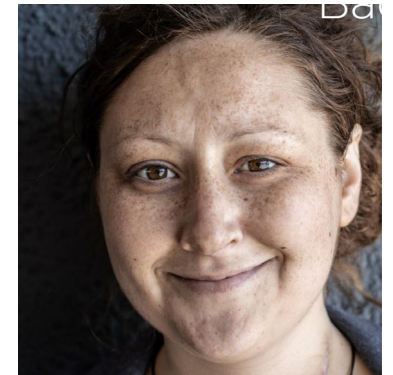
"I am still looking [for housing] and two years into it... Antioch and other places are miles away. I built a life here for myself and want to stay here. I want to be close to my son and grandsons. Nothing has come up in Oakland."

— Participant 30, Black woman, aged 65+



"I first became homeless when I was 59. I had a bad heart attack and couldn't work. I had savings, then the money ran out and I had no place to go."

— CRE Focus Group Participant, Black man, aged 50-64



Preview



Goals and strategies

1 Prevent homelessness for our residents

- a. Address racial disparities in mainstream/upstream systems to prevent racially disproportionate inflow into homelessness
- b. Focus resources for prevention on people most likely to lose their homes
- c. Rapidly resolve episodes of homelessness through Housing Problem Solving
- d. Prevent racially disproportionate returns to homelessness

3 Increase housing solutions

- a. Add units and subsidies for supportive housing, including new models for frail/older adults
- b. Create dedicated affordable housing subsidies for people who do not need intensive services
- c. Create shallow subsidies for those who can exit or avoid homelessness with more limited assistance
- d. Add new slots of rapid rehousing for those who can pay full rent over time
- e. Ensure new housing funding is distributed across the county according to need
- f. Reduce entry barriers to housing and ensure racial equity in referrals and placements

2 Connect people to shelter and needed resources

- a. Expand access in key neighborhoods and continue improvements to Coordinated Entry
- b. Lower programmatic barriers to crisis services such as prevention, problem solving, and shelter
- c. Prevent discharge from mainstream systems to homelessness
- d. Significantly increase the availability of shelter, especially non-congregate models, to serve vulnerable adults and families with children and to reduce unsheltered homelessness
- e. Provide accessible behavioral health services to people with serious mental illness or substance use needs and who are unsheltered, in shelter, or in supportive housing programs

4 Strengthen coordination, communication and capacity

- a. Use data to improve outcomes and track racial equity impacts
- b. Improve messaging and information availability
- c. Build infrastructure to support new and expanded programs



Feedback on the Plan

Public Comment and Other Feedback

Home Together 2026: Comments

- Data modeling: Modeling for the ideal system could lead to failure.
 - Implementation Committee looked at all scenarios and chose this to chart our course.
 - Action plans will set specific goals based on current/projected resources.
- Timing: Housing timelines may be too optimistic given time to build.
 - The plan depends on identifying new units in the private market and providing subsidies. Built units are projects in earlier years only if they are in progress.
 - Homekey and CCE sites would be primary source of new units in 2021-2023.
- Mainstream Systems: All discharges/releases should include a housing plan.
 - Partners are working to build housing planning into major systems.
 - Proposed new units for respite/board and care/behavioral health

More Comments

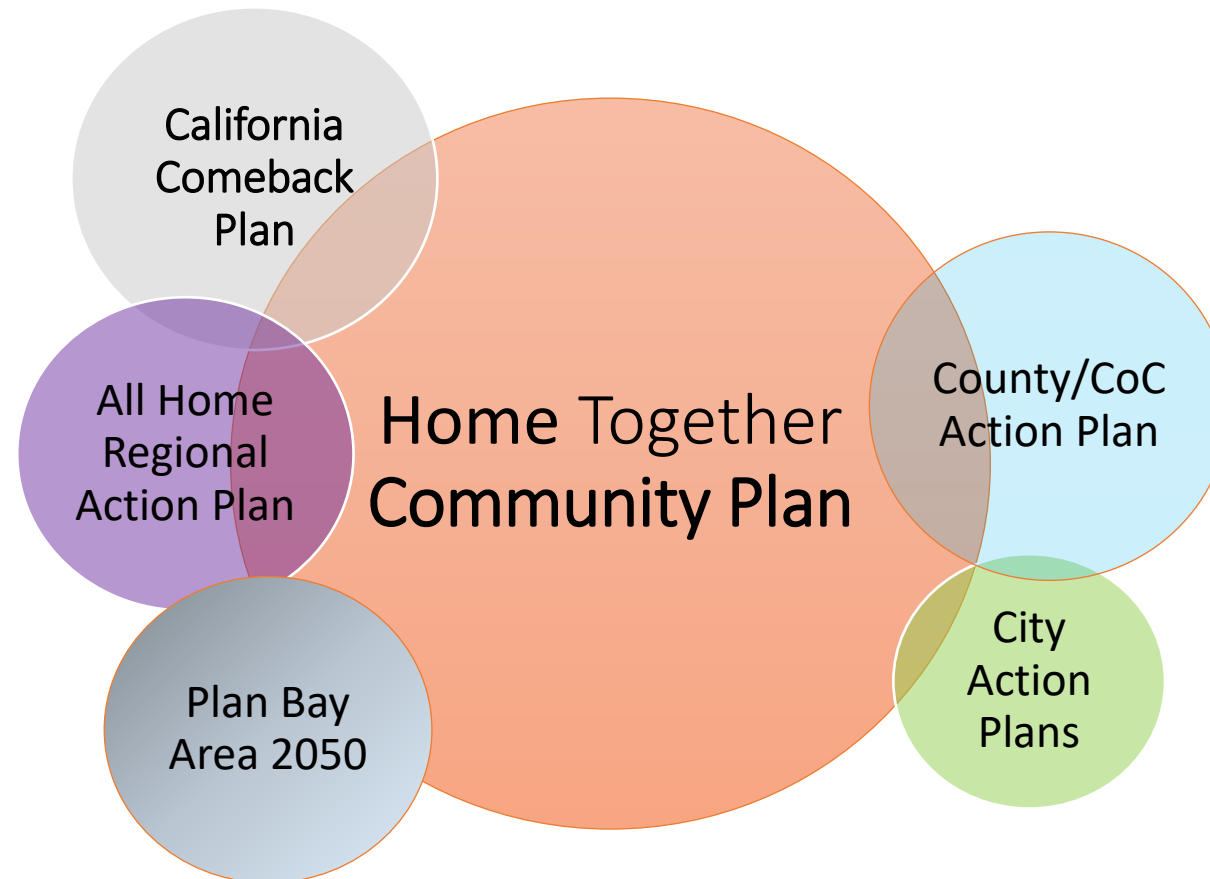
- Behavioral Health: Plan needs more specificity on how behavioral health services will be offered.
 - More specific action steps have been added to the plan and being developed in County plan.
 - State budget request to enhance behavioral health support and substance use counseling, in addition to new respite and supportive housing.
- Encampment Support: Provide more resources to improve encampment conditions.
 - The plan contemplates adding resources for health and hygiene support, additional interim measures, and referral resources for unsheltered residents.
 - May also be addressed in City action plans.
- Housing Placements: Ensure housing programs meet the needs of people referred.
 - Response: Plan calls for increased housing of several types, with high and low levels of services according to assessed needs.
- Allocation Plan: Ensure people with lived expertise are involved.
 - Governance planning includes people with lived expertise in all decision-making areas.
 - County/CoC funds can be used to offer stipends for participation.



Next Steps

Home Together 2026 Review: Community Plan + Action Plans

- Countywide **Community Plan** connects CRE Report and Systems Model to regional and state
- Companion **County and CoC Action Plan** replaces the prior 3-year County Homelessness Action Plan
- Cities are encouraged to adopt and implement companion **City Action Plans** to align



Next Steps

- HCSA Board Letter for endorsement on 5/10
- County/CoC Action Plan draft in May
- City Council “Town Hall”
- City Councils agendaize and endorse 4/22-5/31
- City Action Plans to correspond
- Report on Goals for State funding to CoC and Board in June

Questions and Comments

Resolution

Resolved that the Leadership Board of the Continuum of Care hereby endorses the Home Together 2026 Community Plan that lays out the goals, strategies, and investments needed to dramatically reduce homelessness and reverse racial disparities through centering racial equity.