



Leadership Board Meeting

May 26, 2021





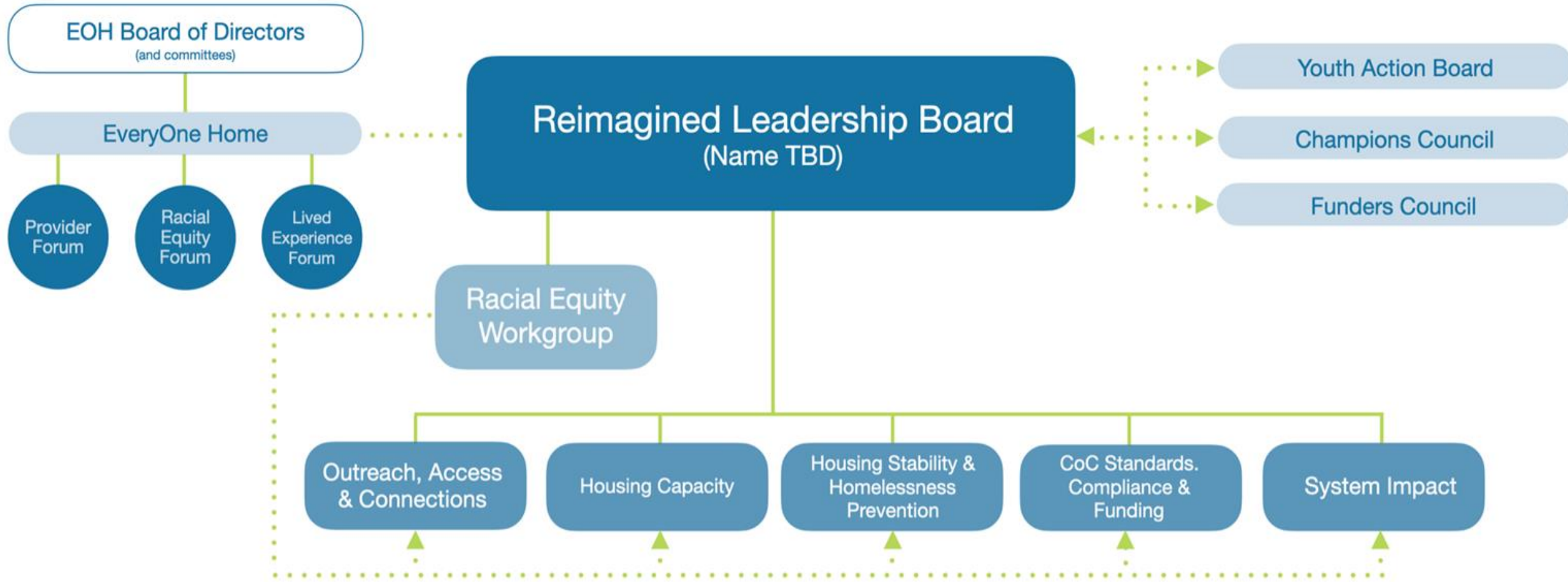
Leadership Board Statement of Purpose

**Currently Approved*

The Leadership Board provides overall leadership for our collective impact initiative and serves as the compass for the homelessness response system. It sets the vision, strategic direction and collective goals for the entire homelessness response system and ensures accountability from all subcommittees and workgroups. The Leadership Board ensures that racial equity is at the center of our work to end homelessness and that people with lived experience are represented in decision-making roles throughout the system.

NEW PROPOSED GOVERNANCE STRUCTURE*

COLLECTIVE IMPACT MODEL



Key

- Line of Authority
- ⋯ Line of Influence and Communication
- ▶ Directional Flow of Influence/Communication

*Committee names TBD



Pending Composition Decisions

Current Leadership Board Composition

1. Alameda County Community Development Agency (appointed seat)
2. Alameda County Health Care Services Agency (appointed seat)
3. Alameda County Social Services Agency (appointed seat)
4. City of Berkeley (appointed seat)
5. City of Oakland (appointed seat)
6. Veterans Affairs (appointed seat)
7. Jurisdictions within Alameda County
8. School districts
9. Law enforcement
10. Housing Authorities
11. Persons with lived experience of homelessness
12. University or other researcher
13. Provider organizations
14. Housing developers
15. Business, philanthropic and faith leaders

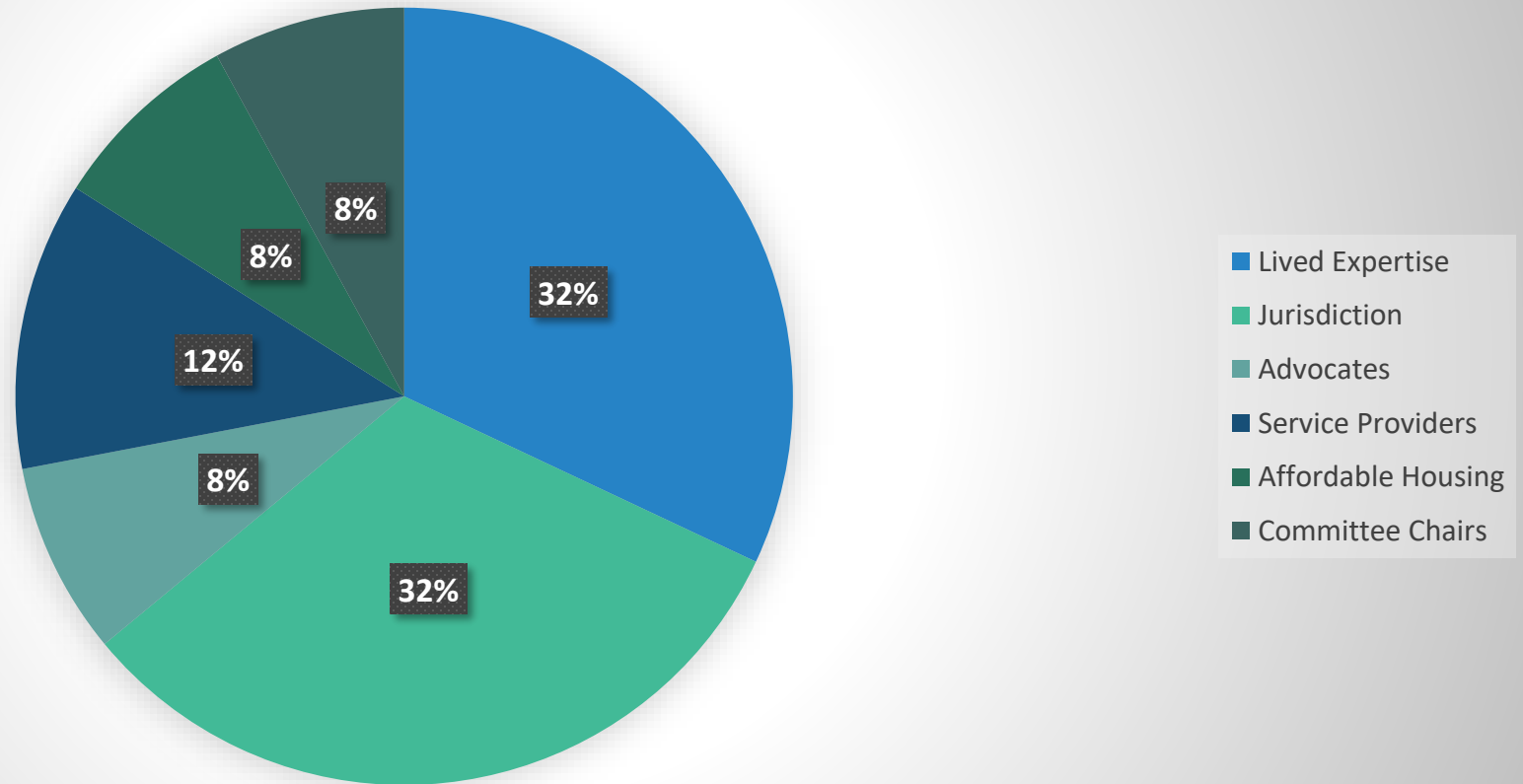
***Note there are currently 24 LB members and numbers 7-15 are suggestions in our Governance Charter for stakeholder groups to recruit from.**

1. Person with lived expertise (8 of 25 people)
2. Person with lived expertise (8 of 25 people)
3. Person with lived expertise (8 of 25 people)
4. Person with lived expertise (8 of 25 people)
5. Person with lived expertise (8 of 25 people)
6. Person with lived expertise (8 of 25 people)
7. Person with lived expertise (8 of 25 people):
Youth Action Board seat
8. Person with lived expertise (8 of 25 people):
Youth Action Board seat
9. **Alameda County Health Care Services Agency,
Office of Homeless Care and Coordination
Director (appointed seat, as liaison to Social
Services, Community Development, Probation,
and other county departments)**
11. **Alameda County Health Care Services Agency,
Office of Homeless Care and Coordination
programs /operational staff (appointed seat)**
12. City of Oakland (appointed seat)
13. City of Berkeley (appointed seat)
11. **Other city (elected from among 12 city
peers)**
12. **Other city (elected from among 12 city
peers)**
13. **Representative from unincorporated
jurisdiction**
14. Representative from Public Housing
Authority
15. Non-profit CE provider (elected from
among peers)
16. Non-profit outreach or temp shelter
provider (elected from among peers)
17. Non-profit permanent housing provider
(elected from among peers)
18. Advocacy and/or citizen seat (elected
seat)
19. Representative from the housing
development community
20. Chair or co-chair from Racial Equity
Collaborative (appointed seat)
21. **Representative from EveryOne Home**

1. Person with lived expertise (8 of 25 people, selected by Nomination Committee)
2. Person with lived expertise
3. Person with lived expertise
4. Person with lived expertise
5. Person with lived expertise
6. Person with lived expertise
7. Person with lived expertise
8. Person with lived expertise (Youth Action Board seat) * [5.5.21 LB voted to designate 1 YAB seat]
9. Alameda County Health Care Services Agency, Office of Homeless Care and Coordination Director (appointed seat)
10. **Alameda County Social Services Agency (appointed seat)**
11. **Alameda County Housing and Community Development (represents unincorporated areas, appointed seat)**
12. City of Oakland (appointed seat)
13. City of Berkeley (represents Albany and
14. **City from the mid-county region (elected from Alameda County Conference of Mayors)**
15. **City from the south-county region (“**
16. **City from the east-county region (“**
17. Public Housing Authority (elected by membership)
18. Representative from affordable housing development (non-profit or public, elected by membership)
19. Non-profit CE provider (elected from among peers)
20. Non-profit outreach or temp shelter provider (elected from among peers)
21. Non-profit permanent housing provider (elected from among peers)
22. Advocacy and/or citizen (elected from membership)
23. **Policy advocacy or affordable housing advocacy organization (elected by membership)**

Proposed Leadership Board Composition

Stakeholder Groups



Governance Workgroup Update

Governance Workgroup Meeting on May 16, 2021

Key Questions/Responses:

1. **Should there be regional representation –OR- small/mid-size city appointed seats on the Leadership Board?**
 - *Consensus on regional representation**

2. **What should be the selection/nomination process for city/regional representatives?**
 - *Consensus on Alameda Conference of Mayors appointing regional representatives*

3. **Pros/cons of having elected officials on Leadership Board**
 - Open discussion

4. **Recommendation regarding city/regional representatives on the Leadership Board**
 - *Consensus on developing recommended qualifications for appointments made by the AC Conference of Mayors*

5. **Input on the overall composition of the Leadership Board**
 - *Pending*



Today's Key Discussion Points/Questions

1. Desired criteria or **qualifications for regional representatives** on the Leadership Board?
2. Executive Committee composition review/approval
3. Nomination and selection process for the **Leadership Board**?
 - A. EOH recommends that the Executive Committee serve as the Nomination Committee for *elected* seats.
4. Nomination and selection process for **sub-committees? (i.e., “Racial equity workgroup)?**

Today's Approach

Consensus + Democratic = Final Decision



Recommended Qualities for Regional Representatives

Recommended qualifications for appointments made by AC Conference of Mayors

- Proven commitment to the Collective Impact mission
- Commitment to centering the voices of individuals with lived experience and racial equity
- Ability to attend 75% of meetings annually and remain responsive in between monthly meetings
- Ability to serve 3-year terms
- Willing to work towards consensus and remain open minded
- Willing to serve as an Ambassador of the collective impact effort



Proposed Executive Committee/ Nomination Committee

The Leadership Board will have a Chair* to serve as its officer. The Chair will be elected by the CoC membership and serve for a term of one year. The Chair is responsible for facilitating the Leadership Board meetings. The Chair will serve as convener of the full membership meetings and Executive Committee. The Chair may designate a Board member to serve in its stead for instances of periodic absences.

Each year, the *Leadership Board will elect an Executive Committee to lead the Board and make decisions between full Board meetings* that do not require full Board approval. The Executive Committee will include the following seats:

- Leadership Board Chair
- Jurisdiction: Oakland, Berkeley, and the Unincorporated County (rotating annually among the three)
- One city excluding Oakland and Berkeley
- Nonprofit provider
- Person with lived expertise
- County OHCC Director

Nomination Process

Proposed nomination /selection process for Leadership Board

- **Appointed Seat:** an agency, jurisdiction or subcommittee with an appointed seat designates a representative.
- **Elected by Peers:** a representative is elected by a majority vote of their peers.
 - (Ex. Service providers stakeholder forum, Mayor's Conference, etc.)
- **Elected by Membership:** the EveryOne Home membership elects a representative via majority vote.
- **Nomination Committee:** the nomination committee reviews applications and selects the top candidates for the remaining seats.

1. Person with lived expertise (8 of 25 people, selected by Nomination Committee)
2. Person with lived expertise
3. Person with lived expertise
4. Person with lived expertise
5. Person with lived expertise
6. Person with lived expertise
7. Person with lived expertise
8. Person with lived expertise (Youth Action Board seat) * [5.5.21 LB voted to designate 1 YAB seat]
9. Alameda County Health Care Services Agency, Office of Homeless Care and Coordination Director (appointed seat)
10. **Alameda County Social Services Agency (appointed seat)**
11. **Alameda County Housing and Community Development (appointed seat)**
12. City of Oakland (appointed seat)
13. City of Berkeley (appointed seat)
14. **City from the mid-county region (elected from Alameda County Conference of Mayors)**
15. **City from the south-county region (“**
16. **City from the east-county region (“**
17. Public Housing Authority (elected by membership)
18. Representative from affordable housing development (non-profit or public, elected by membership)
19. Non-profit CE provider (elected from among peers)
20. Non-profit outreach or temp shelter provider (elected from among peers)
21. Non-profit permanent housing provider (elected from among peers)
22. Advocacy and/or citizen (elected from membership)
23. **Policy advocacy or affordable housing advocacy organization (elected by membership)**

Next Steps

Outstanding Items

- Leadership Board Composition
- Subcommittee Size & Composition
- EveryOne Home Board
- Housekeeping

Leadership Board Meetings

- June Meeting TBD

Community Meeting

- By June 2021*