

# CITY OF OAKLAND

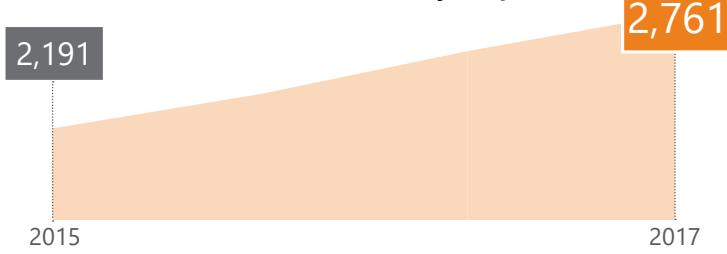
## 2017 EVERYONE COUNTS

### HOMELESS POINT-IN-TIME COUNT AND SURVEY

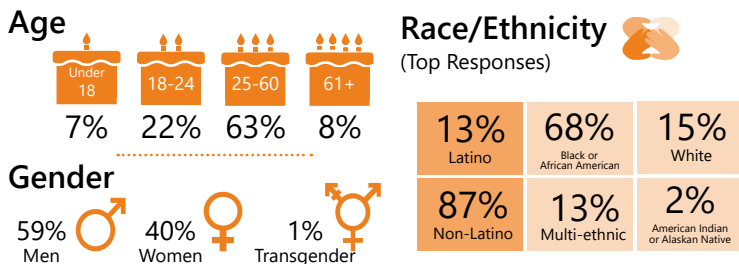
Every two years, during the last 10 days of January, communities across the country conduct comprehensive counts of the local homeless populations in order to measure the prevalence of homelessness in each local Continuum of Care.

The 2017 Alameda County Point-in-Time Count was a community-wide effort conducted on January 30, 2017. In the weeks following the street count, a survey was administered across Alameda County. In the city of Oakland, 457 unsheltered and sheltered homeless individuals were surveyed, in order to profile their experience and characteristics.

#### 2017 Homeless Census Survey Population



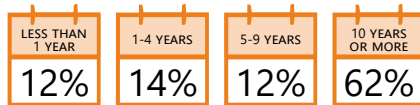
#### 2017 Sheltered/Unsheltered Population



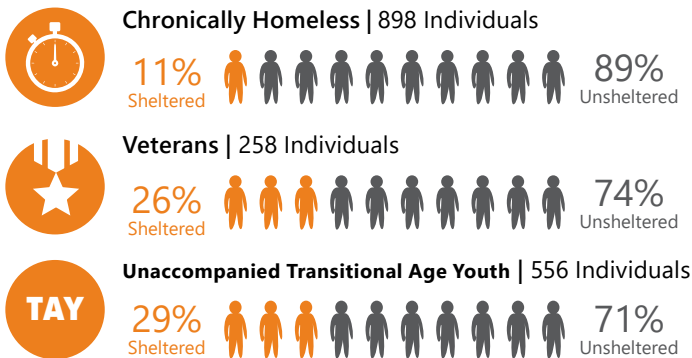
#### Residence Prior to Homelessness



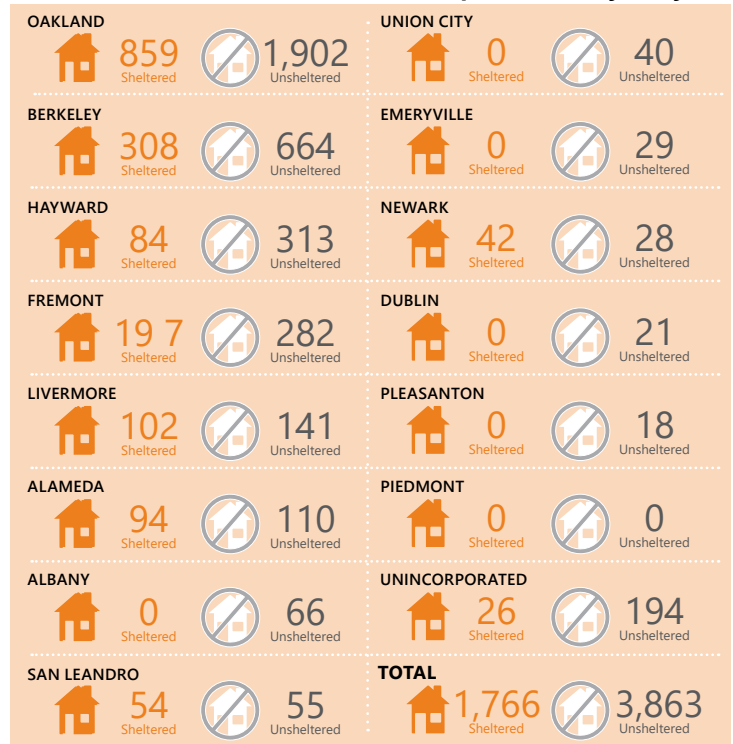
#### Length of Time in Alameda County



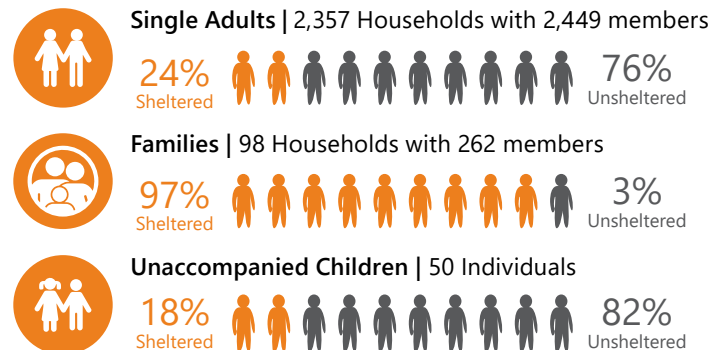
#### Subpopulations



#### 2017 Sheltered/Unsheltered Population by City



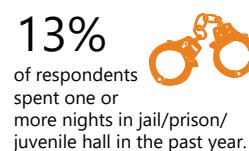
#### Household Breakdown



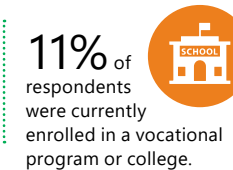
#### Foster Care



#### Justice System Involvement



#### Post K-12 Education



## Health Conditions

Current health conditions affecting housing stability or employment.

(Note: Multiple response question, numbers will not total to 100%)



46%

Chronic health problems



45%

Psychiatric or emotional conditions



36%

Post-Traumatic Stress Disorder



32%

Physical disability



31%

Drug or alcohol abuse



12%

Traumatic brain injury



7%

AIDS/HIV related

## Disabling Conditions

Respondents reported the number of conditions that limited their ability to maintain work or housing. Many reported multiple conditions.

18% of survey respondents reported having one disabling condition.

12% of survey respondents reported having two disabling conditions.

22% of survey respondents reported having three or more disabling conditions.

## First Homelessness Episode



30% Yes  
70% No

35% of those experiencing homelessness for the first time were homeless for one year or more

## Age at First Episode of Homelessness

10%	19%	38%
0-17	18-24	25-39
16%	16%	1%
40-49	50-64	65+

## Primary Cause of Homelessness (Top 6 Responses)

58%	14%	14%
Money Issues	Personal Relationships	Mental Health Issues
12%	10%	6%
Physical Health Issues	Substance Use Issues	Incarceration

## What Might Have Prevented Homelessness (Top 4 Responses)

48%	36%
Rent Assistance	Employment Assistance
25%	25%
Food Assistance	Mental Health Services

## Not Interested in Housing

1%



Only 1% of survey respondents said they were not interested in Independent, Affordable Rental Housing or Housing with Supportive Services.



## Duration of Current Episode of Homelessness

4%  
30 days or less

36%  
1-11 months

60%  
1 year or more

## Services and Assistance



66% of survey respondents reported receiving benefits or support

## Services Currently Accessing (Top 6 Responses)

68%	49%	32%
Free Meals	Emergency Shelter	Health Services
17%	16%	14%
Transitional Housing	Drop-In Center	Mental Health Services

## Reasons for Not Accessing Shelter Services (Top 6 Responses)

41%	40%	28%
Bugs and germs	They are full	They are too crowded
18%	16%	14%
There are too many rules	Concerns for personal safety	They are too far away

## \*Subpopulation Definitions

### Chronically Homeless

An individual with a disabling condition or a family with a head of household with a disabling condition who:

- » Has been continuously homeless for 1 year or more and/or;
- » Has experienced 4 or more episodes of homelessness within the past 3 years.

### Veterans

Persons who have served on active duty in the Armed Forces of the United States. This does not include inactive military reserves or the National Guard unless the person was called up to active duty.

### Families

A household with at least one adult member (persons 18 or older) and at least one child member (persons under 18).

### Unaccompanied Children

Children under the age of 18 who are homeless and living without a parent or legal guardian.

### Transition-Age Youth

Young adults between the ages of 18 and 24 years old.

Oakland County will release a comprehensive report of The EveryOne Home 2017 Homeless Count and Survey in Summer 2017. For more information about EveryOne Home and effort to address homelessness in Alameda County please visit [www.EveryOneHome.org](http://www.EveryOneHome.org)

Source: Applied Survey Research. (2017). Alameda County Homeless Census & Survey. Watsonville, CA.