

# Alameda County

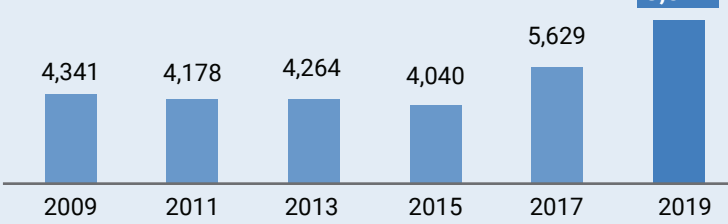
## 2019 EveryOne Counts

### Homeless Point-in-Time Count & Survey

Every two years, during the last 10 days of January, communities across the country conduct comprehensive counts of people experiencing homelessness in order to measure the prevalence of homelessness in each local community.

The 2019 Alameda County EveryOne Home Point-in-Time Count was a community-wide effort conducted on January 30th, 2019. In the weeks following the street count, a survey was administered to **1,681** unsheltered and sheltered individuals experiencing homelessness in order to profile their experience and characteristics.

#### Homeless Census Population

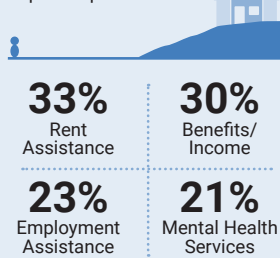


#### Sheltered/ Unsheltered Population



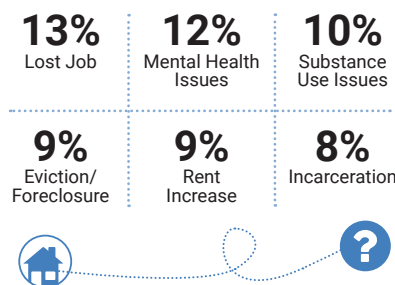
#### What Might Have Prevented Homelessness

Top 4 Responses



#### Primary Causes of Homelessness

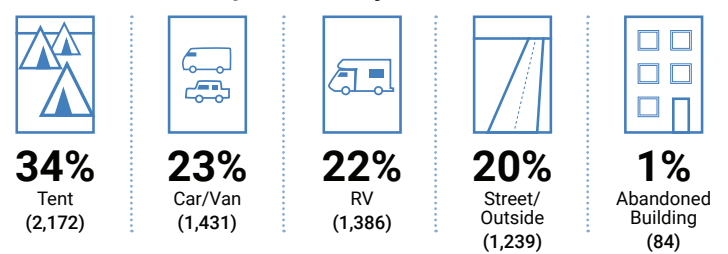
Top 6 Responses



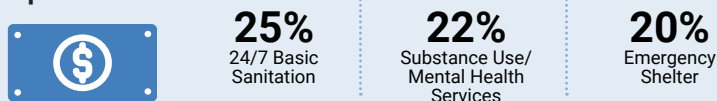
#### Sheltered/Unsheltered Population by City



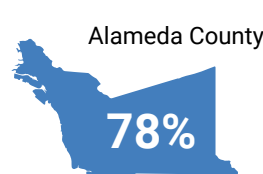
#### Unsheltered Population by Location



#### How New Money Should Be Spent



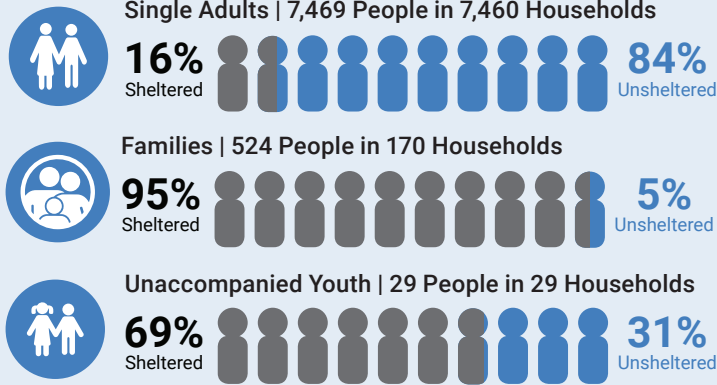
#### Residence Prior to Homelessness



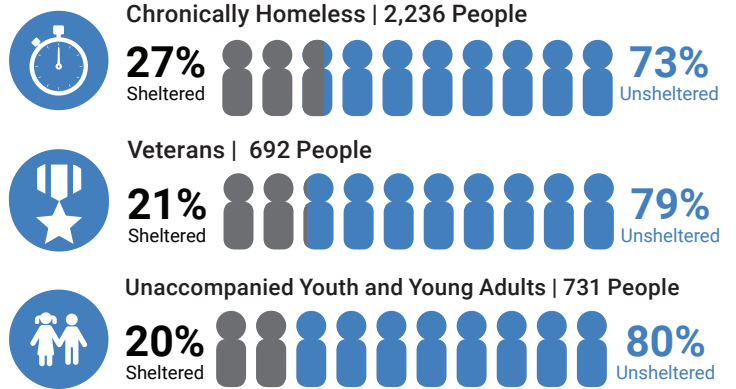
#### Length of Time in Alameda County



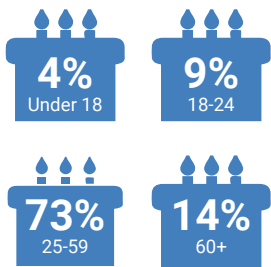
## Household Breakdown



## Subpopulations



## Age

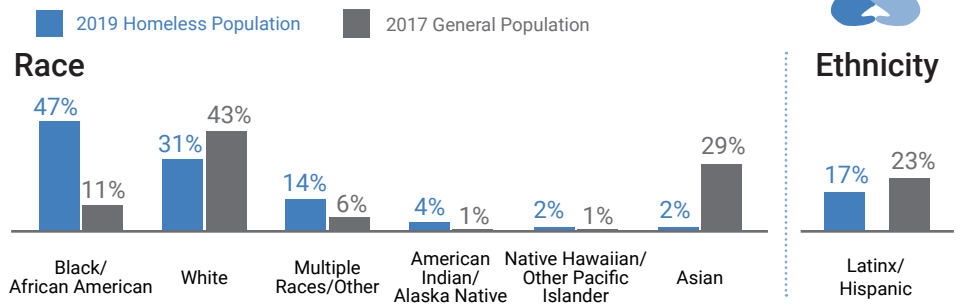


## LGBTQ+ Status

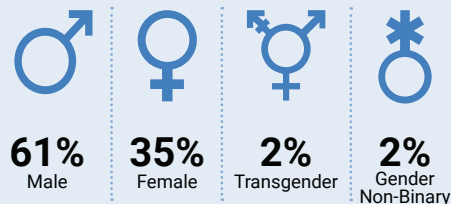
**14%** of survey respondents identified as LGBTQ+.



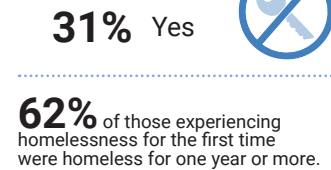
## Race and Ethnicity Compared to General Population



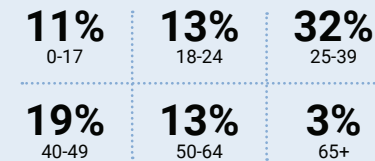
## Gender



## First Episode of Homelessness



## Age at First Episode of Homelessness



## Not Interested in Housing

**3%** of survey respondents said they were not interested in Independent, Affordable Rental Housing or Housing with Supportive Services.

## Health Conditions<sup>+</sup>

Current health conditions reported by survey respondents.



**39%** Psychiatric/Emotional Conditions



**30%** Alcohol & Drug Use



**30%** Post-Traumatic Stress Disorder



**26%** Chronic Health Problems



**24%** Physical Disability



**13%** Traumatic Brain Injury



**5%** HIV/AIDS Related Illness

## Disabling Conditions

**42%** of survey respondents reported having at least one disabling condition.



A disabling condition is defined by HUD as a developmental disability, HIV/AIDS, or a long-term physical or mental impairment that impacts a person's ability to live independently, but could be improved with stable housing.

For definitions, additional information on methodology or efforts to address homelessness, visit [www.everyonehome.org](http://www.everyonehome.org).

Alameda County will release a comprehensive report of the 2019 EveryOne Home Homeless Count and Survey in Summer 2019. For more information about EveryOne Home and efforts to address homelessness in Alameda County please visit [www.EveryOneHome.org](http://www.EveryOneHome.org)

Source: Applied Survey Research, 2019, Alameda EveryOne Home Homeless Count & Survey, Watsonville, CA.